

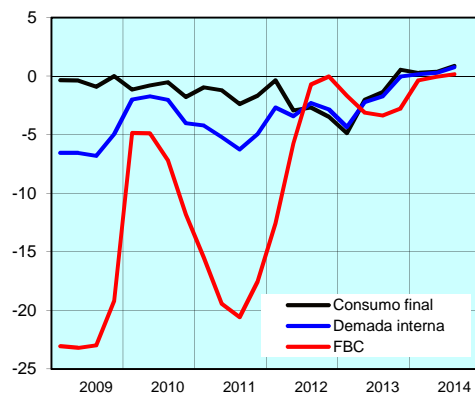
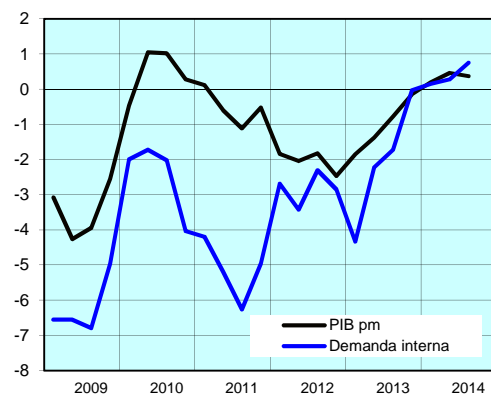
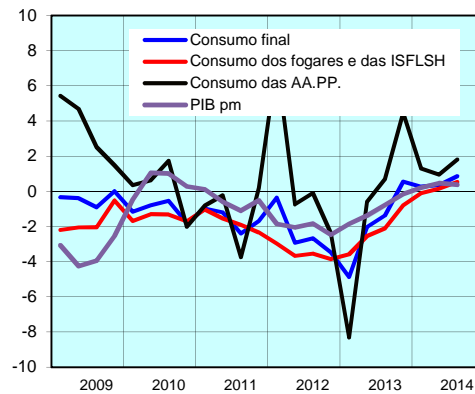
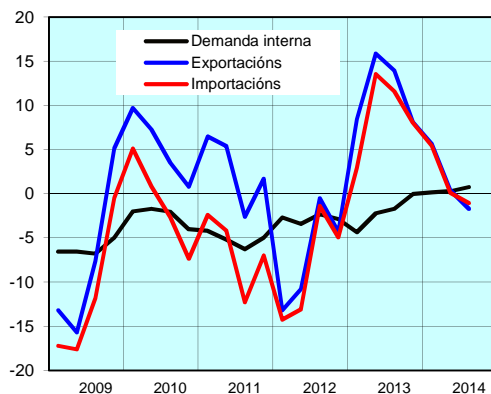
III. ECONOMÍA GALEGA
III.1 PRODUCCIÓN E DEMANDA

III.1.1.1 Contabilidade trimestral. Demanda.
Índices de volume encadeados. Referencia ano 2008=100.
Datos corrixidos de estacionalidade e calendario.

Período	PIB E COMPONENTES DA DEMANDA								
	PIB pm	Gasto en consumo final			Formación bruta de capital (FBC)	Demanda Interna	Exportación de bens e servizos	Importación de bens e servizos	
		Total	Fogares e ISFLSF	AA. PP.					
Taxa de variación interanual en %									
2009	-3.5	-0.4	-1.7	3.5	-22.1	-6.2	-8.3	-12.1	
2010	0.5	-1.1	-1.5	0.2	-7.2	-2.4	5.2	-1.1	
2011	-0.5	-1.6	-1.7	-1.2	-18.2	-5.1	2.7	-6.4	
2012	-2.0	-2.3	-3.5	1.0	-5.0	-2.8	-7.4	-8.7	
2013	-1.0	-2.0	-2.3	-1.1	-2.7	-2.1	11.6	9.0	
2014*	0.3	0.5	0.2	1.4	-0.1	0.4	1.3	1.4	
2010	I	-0.5	-1.2	-1.7	0.4	-4.9	-2.0	9.7	5.1
	II	1.0	-0.8	-1.3	0.6	-4.9	-1.7	7.3	0.8
	III	1.0	-0.5	-1.3	1.7	-7.2	-2.0	3.5	-2.7
	IV	0.3	-1.8	-1.7	-2.0	-11.8	-4.0	0.8	-7.4
2011	I	0.1	-1.0	-1.0	-0.8	-15.5	-4.2	6.5	-2.4
	II	-0.6	-1.2	-1.5	-0.2	-19.4	-5.2	5.4	-4.2
	III	-1.1	-2.4	-1.9	-3.7	-20.6	-6.3	-2.6	-12.3
	IV	-0.5	-1.7	-2.3	0.2	-17.5	-5.0	1.7	-7.0
2012	I	-1.8	-0.3	-3.0	7.4	-12.6	-2.7	-13.2	-14.3
	II	-2.0	-2.9	-3.7	-0.7	-5.7	-3.4	-10.8	-13.1
	III	-1.8	-2.7	-3.5	-0.1	-0.7	-2.3	-0.5	-1.4
	IV	-2.5	-3.5	-3.8	-2.4	0.0	-2.8	-4.3	-4.9
2013	I	-1.8	-4.9	-3.6	-8.3	-1.7	-4.3	8.5	2.9
	II	-1.4	-2.0	-2.5	-0.6	-3.1	-2.2	15.9	13.6
	III	-0.8	-1.4	-2.1	0.7	-3.4	-1.7	13.9	11.6
	IV	-0.1	0.5	-0.8	4.5	-2.8	0.0	8.1	8.0
2014	I	0.2	0.3	-0.1	1.3	-0.4	0.2	5.7	5.4
	II	0.5	0.4	0.2	0.9	-0.1	0.3	0.4	0.1
	III	0.4	0.9	0.5	1.8	0.2	0.8	-1.7	-1.0
	IV	-	-	-	-	-	-	-	-

ISFLSF: Institucións Sin Fins de Lucro ó Servizo dos Fogares.

Taxa de variación interanual en %



III. ECONOMÍA GALEGA

III.1 PRODUCCIÓN E DEMANDA

III.1.1.2 Contabilidade trimestral. Oferta.

Índices de volume encadeados. Referencia ano 2008=100.

Datos corrixidos de estacionalidade e calendario.

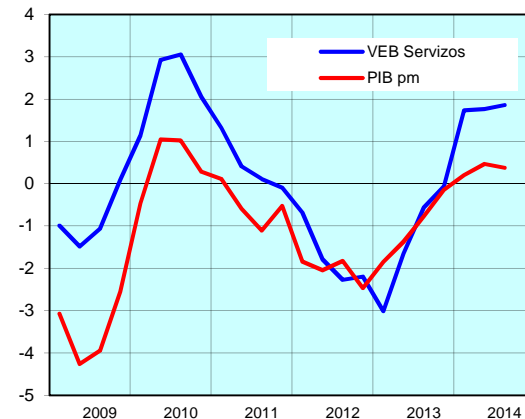
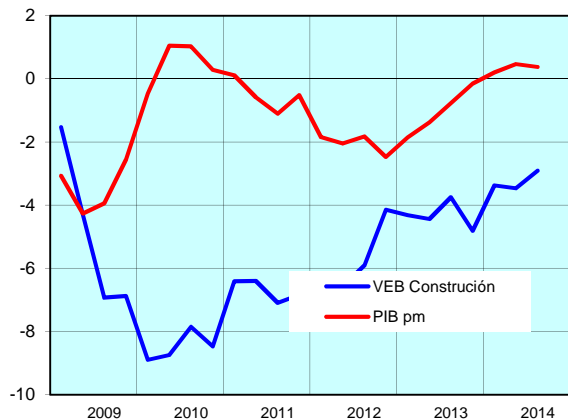
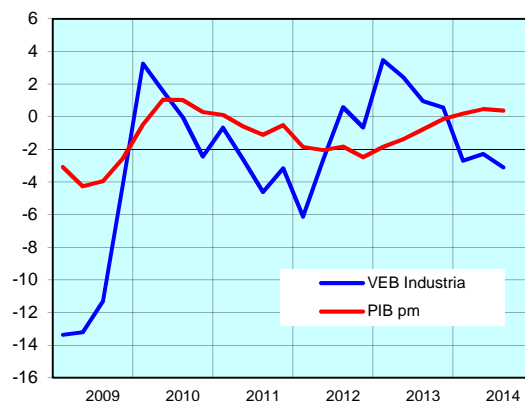
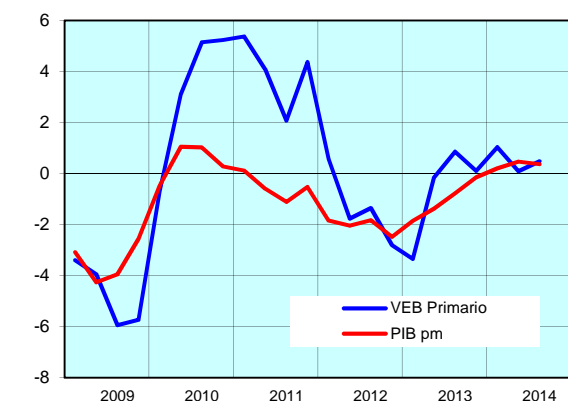
Período	PIB E COMPONENTES DA OFERTA							
	PIBpm	VEBpb total	VEBpb primario ⁽¹⁾	VEBpb non primario	VEBpb Industria	VEBpb Construción	VEBpb Servizos	Impostos netos s/productos

Taxa de variación interanual en %

2009	-3.5	-3.5	-4.7	-3.5	-10.6	-4.9	-0.9	-2.5
2010	0.5	0.4	3.2	0.3	0.6	-8.5	2.3	0.7
2011	-0.5	-0.9	4.0	-1.1	-2.8	-6.7	0.4	3.2
2012	-2.0	-2.3	-1.3	-2.4	-2.2	-6.1	-1.7	0.7
2013	-1.0	-1.0	-0.6	-1.0	1.9	-4.3	-1.3	-1.2
2014*	0.3	0.3	0.5	0.3	-2.7	-3.2	1.8	0.5

2011	I	0.1	-0.1	5.4	-0.4	-0.7	-6.4	1.3	2.4
	II	-0.6	-1.0	4.1	-1.2	-2.6	-6.4	0.4	3.4
	III	-1.1	-1.6	2.1	-1.8	-4.6	-7.1	0.1	3.9
	IV	-0.5	-0.9	4.4	-1.1	-3.2	-6.8	-0.1	3.1
2012	I	-1.8	-2.2	0.6	-2.4	-6.1	-7.8	-0.7	2.0
	II	-2.0	-2.3	-1.8	-2.4	-2.6	-6.6	-1.8	1.0
	III	-1.8	-2.0	-1.3	-2.0	0.6	-5.9	-2.3	0.0
	IV	-2.5	-2.7	-2.8	-2.7	-0.6	-4.1	-2.2	-0.3
2013	I	-1.8	-1.9	-3.3	-1.8	3.5	-4.3	-3.0	-1.3
	II	-1.4	-1.4	-0.2	-1.5	2.4	-4.4	-1.7	-1.1
	III	-0.8	-0.8	0.9	-0.8	1.0	-3.7	-0.6	-0.9
	IV	-0.1	0.0	0.1	0.0	0.6	-4.8	-0.1	-1.5
2014	I	0.2	0.1	1.0	0.1	-2.7	-3.4	1.7	0.8
	II	0.5	0.5	0.1	0.5	-2.3	-3.5	1.8	0.4
	III	0.4	0.4	0.5	0.4	-3.1	-2.9	1.9	0.5
	IV	-	-	-	-	-	-	-	-

Taxa de variación interanual en %



III. ECONOMÍA GALEGA

III.1 PRODUCCIÓN E DEMANDA

III.1.2 Sector exterior

III.1.2.1 Índices de competitividade das exportacións galegas. Base 2010

Período	Fronte ós países da UE					Fronte ós países da OCDE				
	Total				Compoñente nominal	Total				Compoñente nominal
	Con IPC	Con IPRI	Con IVUe	Con CLU		Con IPC	Con IPRI	Con IVUe	Con CLU	

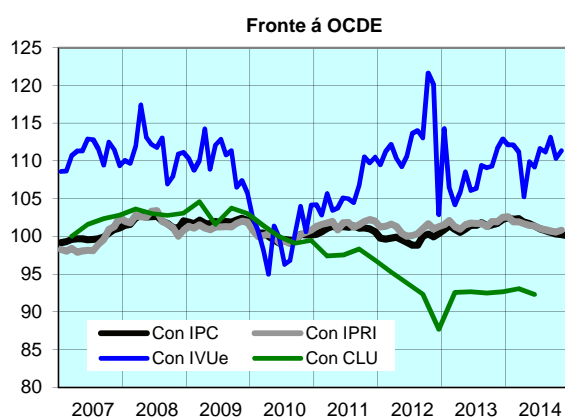
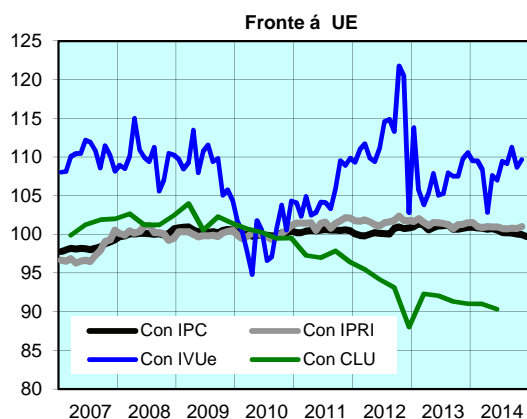
Índices 2010=100

2008	100.0	100.2	109.8	101.9	99.4	101.9	102.0	111.3	103.1	101.0
2009	100.5	100.1	108.8	102.1	100.8	101.9	101.4	109.9	103.3	102.0
2010	100.0	100.0	100.0	100.0	100.0	100.0	100.0	100.0	100.0	100.0
2011	100.5	101.5	105.2	97.1	99.9	101.0	101.7	106.0	97.5	100.5
2012	100.3	101.7	112.6	92.6	99.8	99.7	101.0	112.4	92.3	99.3
2013	101.0	101.4	107.6	91.6	100.1	101.4	101.7	108.7	92.6	100.9
2014	100.5	100.1	101.3	101.8

2012	I	99.9	101.8	110.7	95.5	99.8	99.7	101.4	111.0	95.3	99.8
	II	100.1	101.3	110.1	94.2	99.9	99.5	100.6	110.1	93.8	99.4
	III	100.3	101.6	114.3	93.1	99.6	99.2	100.5	113.6	92.3	98.6
	IV	100.9	102.0	115.0	88.0	99.8	100.2	101.3	114.9	87.7	99.3
2013	I	101.2	101.8	107.8	92.3	100.0	101.1	101.7	108.3	92.6	100.1
	II	100.9	101.4	106.1	92.1	100.1	101.0	101.4	106.8	92.6	100.4
	III	101.0	101.1	106.9	91.3	100.2	101.6	101.6	108.3	92.5	101.1
	IV	100.8	101.4	109.3	91.0	100.2	101.8	102.2	111.3	92.6	101.6
2014	I	100.9	101.2	109.1	91.0	100.2	102.4	102.1	111.8	93.1	102.3
	II	100.7	101.0	105.8	90.3	100.1	101.7	101.5	108.1	92.3	101.9
	III	100.2	100.7	110.0	-	100.0	100.8	100.9	112.0	-	101.5
	IV	99.9	-	-	-	100.0	100.2	-	-	-	101.3

2014	XAN	100.9	101.5	109.5	-	100.1	102.4	102.6	112.1	-	102.2
	FEB	100.8	101.0	109.5	-	100.1	102.3	101.9	112.1	-	102.2
	MAR	100.8	100.9	108.4	-	100.2	102.3	101.9	111.2	-	102.4
	ABR	100.7	101.0	102.8	-	100.2	101.9	101.7	105.2	-	102.2
	MAI	100.8	101.0	107.6	-	100.1	101.7	101.4	109.9	-	101.9
	XUÑ	100.6	101.0	107.0	-	100.0	101.4	101.4	109.2	-	101.7
	XUL	100.3	100.7	109.5	-	100.0	101.0	101.1	111.7	-	101.6
	AGO	100.2	100.7	109.1	-	100.0	100.8	100.9	111.2	-	101.6
	SET	100.2	100.8	111.3	-	100.0	100.5	100.7	113.1	-	101.3
	OUT	100.0	100.8	108.6	-	100.0	100.3	100.6	110.3	-	101.2
	NOV	100.0	101.0	109.7	-	100.0	100.2	100.8	111.4	-	101.2
	DEC	99.7	-	100.0	100.1	-	101.4
2015	XAN	-	-	..

* Un aumento do índice implica una perda de competitividade e á inversa.



III. ECONOMÍA GALEGA

III.1 PRODUCCIÓN E DEMANDA

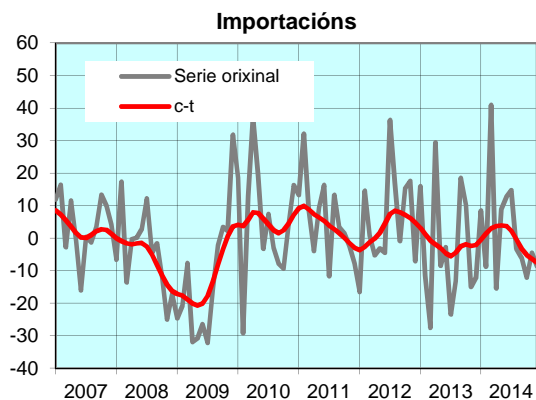
III.1.2 Sector exterior

III.1.2.2 Comercio exterior en euros correntes

Período	Series orixinais					Series ciclo-tendencia					
	Millóns de euros			Cobertura %	TVI (%)		Millóns de euros			Cobertura %	
	Export	Import	Saldo		Export	Import	Export	Import	Saldo		
2008	15740.1	15498.5	241.5	101.6	-5.6	-4.0	15530.1	15190.1	340.0	102.2	
2009	13957.8	13165.9	791.9	106.0	-11.3	-15.1	13923.1	13185.6	737.5	105.6	
2010	14913.2	13710.0	1203.2	108.8	6.8	4.1	15117.1	13815.9	1301.2	109.4	
2011	17150.6	14367.6	2783.0	119.4	15.0	4.8	16865.6	14389.7	2475.9	117.2	
2012	16665.8	15035.6	1630.2	110.8	-2.8	4.6	16109.4	14864.7	1244.7	108.4	
2013	18423.8	14384.7	4039.1	128.1	10.5	-4.3	18121.7	14555.7	3565.9	124.5	
2014	17828.7	14540.1	3288.5	122.6	-3.2	1.1	18096.7	14490.6	3606.1	124.9	
2012	I	3808.6	3639.9	168.6	104.6	-19.4	-1.2	3901.0	3620.5	280.5	107.7
	II	3861.5	3512.5	348.9	109.9	-14.5	-4.2	3899.2	3680.5	218.7	105.9
	III	4702.6	3909.6	793.0	120.3	24.0	16.9	4114.8	3787.0	327.8	108.7
	IV	4293.2	3973.5	319.6	108.0	4.3	8.1	4194.5	3776.7	417.8	111.1
2013	I	4030.6	3300.7	729.9	122.1	5.8	-9.3	4233.5	3663.9	569.7	115.5
	II	4829.0	3699.0	1130.1	130.6	25.1	5.3	4469.0	3563.5	905.4	125.4
	III	4428.5	3621.2	807.4	122.3	-5.8	-7.4	4681.2	3630.8	1050.4	128.9
	IV	5135.6	3763.8	1371.8	136.4	19.6	-5.3	4738.0	3697.6	1040.4	128.1
2014	I	4312.5	3708.1	604.5	116.3	7.0	12.3	4528.0	3712.7	815.3	122.0
	II	4522.1	3728.5	793.6	121.3	-6.4	0.8	4490.1	3699.4	790.7	121.4
	III	4639.0	3668.1	970.9	126.5	4.8	1.3	4599.9	3613.9	985.9	127.3
	IV	4355.0	3435.5	919.5	126.8	-15.2	-8.7	4478.8	3464.6	1014.1	129.3
2014	XAN	1352.3	1347.3	4.9	100.4	-1.1	8.5	1542.3	1233.3	309.0	125.1
	FEB	1298.5	993.6	304.9	130.7	14.4	-8.8	1502.3	1237.9	264.5	121.4
	MAR	1661.8	1367.1	294.6	121.6	8.8	41.0	1483.3	1241.5	241.8	119.5
	ABR	1297.9	1203.5	94.4	107.8	-21.1	-15.4	1481.6	1239.4	242.2	119.5
	MAI	1658.0	1224.7	433.3	135.4	15.4	9.1	1496.0	1233.5	262.5	121.3
	XUN	1566.2	1300.3	265.9	120.5	-10.3	12.8	1512.5	1226.5	286.0	123.3
	XUL	1519.9	1295.5	224.4	117.3	6.5	14.8	1528.1	1216.5	311.5	125.6
	AGO	1314.6	1041.3	273.3	126.2	-10.7	-3.3	1541.0	1205.6	335.4	127.8
	SET	1804.5	1331.3	473.2	135.5	17.9	-6.0	1530.8	1191.9	338.9	128.4
	OUT	1561.0	1340.0	221.0	116.5	-16.9	-12.1	1505.3	1174.0	331.2	128.2
	NOV	1466.8	1125.4	341.4	130.3	2.3	-4.5	1489.1	1153.5	335.6	129.1
	DEC	1327.3	970.2	357.1	136.8	-27.2	-8.5	1484.3	1137.1	347.3	130.5
2015	XAN	-	-	-	-	-	-	-	-	-	-

Os datos do ano 2013 e 2014 son provisionais.

Taxas de variación interanuais en % (TVI)



III. ECONOMÍA GALEGA

III.1 PRODUCCIÓN E DEMANDA

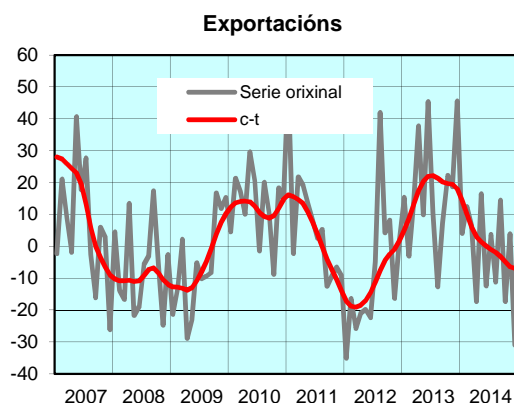
III.1.2 Sector exterior

III.1.2.3 Comercio exterior en euros constantes. Referencia 2010

Período	Series orixinais					Series ciclo-tendencia					
	Millóns de euros			Cobertura %	TVI (%)		Millóns de euros			Cobertura %	
	Export	Import	Saldo		Export	Import	Export	Import	Saldo		
2008	14393.4	15518.1	-1124.7	92.8	-7.4	-8.3	14329.3	15208.7	-879.4	94.2	
2009	13329.7	14251.3	-921.7	93.5	-7.4	-8.2	13473.2	13879.8	-406.6	97.1	
2010	14941.6	13717.4	1224.1	108.9	12.1	-3.7	15104.6	13803.2	1301.4	109.4	
2011	15839.2	13193.9	2645.3	120.0	6.0	-3.8	15621.6	13257.1	2364.5	117.8	
2012	14098.0	13595.7	502.2	103.7	-11.0	3.0	13865.7	13487.4	378.3	102.8	
2013	16455.8	13326.0	3129.7	123.5	16.7	-2.0	16272.9	13549.6	2723.4	120.1	
2014	15840.4	13685.8	2154.7	115.7	-3.7	2.7	16366.6	13921.5	2445.1	117.6	
2012	I	3291.0	3264.8	26.2	100.8	-26.3	-6.0	3432.7	3248.1	184.6	317.1
	II	3431.7	3153.3	278.4	108.8	-21.1	-6.0	3374.5	3301.0	73.4	306.7
	III	3931.6	3501.4	430.2	112.3	12.3	14.7	3482.1	3439.4	42.7	303.7
	IV	3443.7	3676.2	-232.5	93.7	-2.3	10.9	3576.4	3498.9	77.5	306.7
2013	I	3585.6	3015.4	570.2	118.9	9.0	-7.6	3743.2	3385.4	357.8	331.8
	II	4482.9	3427.4	1055.5	130.8	30.6	8.7	4048.3	3284.8	763.5	369.8
	III	3960.4	3438.2	522.2	115.2	0.7	-1.8	4222.8	3395.3	827.5	373.2
	IV	4427.0	3445.1	981.9	128.5	28.6	-6.3	4258.6	3484.0	774.6	366.7
2014	I	3849.2	3390.9	458.3	113.5	7.4	12.5	4119.6	3545.3	574.3	348.6
	II	4226.8	3542.2	684.6	119.3	-5.7	3.4	4108.4	3577.1	531.4	344.6
	III	4060.3	3533.2	527.1	114.9	2.5	2.8	4137.0	3502.6	634.4	354.4
	IV	3704.2	3219.5	484.7	115.1	-16.3	-6.5	4001.5	3296.5	705.0	364.2
2014	XAN	1181.8	1224.1	-42.3	96.5	4.1	10.7	1393.5	1172.2	221.3	118.9
	FEB	1147.5	897.8	249.7	127.8	12.4	-9.8	1368.2	1181.9	186.2	115.8
	MAR	1519.8	1268.9	250.9	119.8	6.3	38.8	1357.9	1191.2	166.8	114.0
	ABR	1279.5	1163.0	116.5	110.0	-17.3	-13.4	1359.8	1195.0	164.7	113.8
	MAI	1521.8	1175.8	346.0	129.4	16.5	11.7	1369.9	1193.1	176.8	114.8
	XUÑ	1425.5	1203.4	222.1	118.5	-12.5	16.7	1378.8	1188.9	189.9	116.0
	XUL	1355.3	1251.9	103.5	108.3	3.7	13.3	1383.3	1180.8	202.5	117.1
	AGO	1150.0	1009.4	140.6	113.9	-11.2	2.3	1383.2	1169.7	213.4	118.2
	SET	1555.0	1271.9	283.0	122.3	14.5	-5.5	1370.5	1152.0	218.5	119.0
	OUT	1346.9	1262.9	84.0	106.6	-17.4	-9.2	1349.5	1126.0	223.5	119.8
	NOV	1270.7	1050.4	220.4	121.0	4.0	-2.5	1331.4	1096.5	234.9	121.4
	DEC	1086.6	906.2	180.3	119.9	-31.0	-7.3	1320.6	1073.9	246.7	123.0
2015	XAN	-	-	-	-	-	-	-	-	-	-

Os datos do ano 2013 e 2014 son provisionais.

Taxas de variación interanuais en % (TVI)



III. ECONOMÍA GALEGA
III.1 PRODUCCIÓN E DEMANDA

III.1.3 Turismo
III.1.3.1 Ocupación hoteleira

Período	Viaxeiros entrados						Pernoitas totais		Grao de ocupación (%)
	Total		Espaníais		Extranxeiros		Nº de pernoitas	TVI	
	Nº de viaxeiros	TVI	Nº de viaxeiros	TVI	Nº de viaxeiros	TVI			

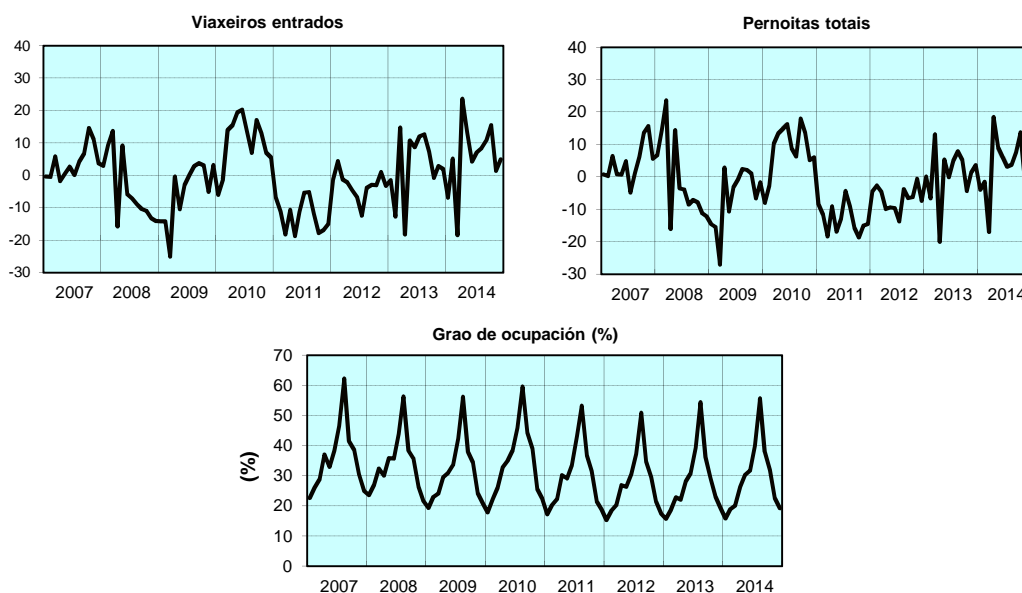
Datos orixinais (miles de persoas ou %)

2008	3532.7	-5.5	2839.4	-5.6	693.3	-5.2	7790.4	-2.9	33.9
2009	3399.5	-3.8	2757.2	-2.9	642.3	-7.4	7444.5	-4.4	31.4
2010	3799.0	11.8	3064.2	11.1	734.8	14.4	8174.1	9.8	34.1
2011	3354.1	-11.7	2631.5	-14.1	722.6	-1.7	7158.3	-12.4	29.8
2012	3216.3	-4.1	2473.6	-6.0	742.8	2.8	6643.3	-7.2	27.5
2013	3374.2	4.9	2545.3	2.9	828.9	11.6	6761.7	1.8	28.4
2014	3615.6	7.2	2649.5	4.1	966.1	16.5	7044.8	4.2	29.2

2012	I	475.2	0.5	409.2	-0.1	66.0	4.6	914.4	-3.9	18.0
	II	853.6	-4.7	615.2	-6.8	238.4	1.4	1668.0	-9.6	28.0
	III	1261.2	-6.4	944.7	-8.9	316.6	2.0	2789.2	-7.8	41.0
	IV	626.3	-2.0	504.6	-3.9	121.7	6.7	1271.6	-4.9	22.9
2013	I	480.5	1.1	411.1	0.5	69.4	5.1	943.5	3.2	19.1
	II	862.4	1.0	582.3	-5.4	280.1	17.5	1591.2	-4.6	27.0
	III	1399.1	10.9	1047.7	10.9	351.4	11.0	2965.1	6.3	43.3
	IV	632.2	0.9	504.2	-0.1	128.0	5.1	1261.9	-0.8	24.0
2014	I	439.2	-8.6	379.2	-7.8	60.0	-13.4	858.5	-9.0	18.3
	II	968.1	12.3	638.2	9.6	329.9	17.8	1755.8	10.3	29.5
	III	1520.6	8.7	1100.7	5.1	419.9	19.5	3100.2	4.6	44.5
	IV	687.6	8.8	531.3	5.4	156.2	22.1	1330.3	5.4	24.6

2014	XAN	120.7	-6.9	104.6	-8.0	16.1	1.0	242.6	-4.0	15.9
	FEB	145.1	5.1	127.0	6.9	18.0	-5.6	270.1	-1.5	18.9
	MAR	173.5	-18.5	147.5	-17.3	26.0	-24.5	345.8	-17.0	20.1
	ABR	267.0	23.6	200.4	27.1	66.6	14.2	489.3	18.4	26.4
	MAI	344.3	13.2	209.8	6.7	134.5	25.2	607.9	9.1	30.3
	XUÑ	356.8	4.3	228.0	0.0	128.8	12.6	658.7	6.1	31.8
	XULL	459.0	7.1	339.1	4.2	119.9	16.5	930.6	3.2	40.0
	AGO	626.3	8.4	477.5	5.6	148.8	18.5	1334.3	3.7	55.7
	SET	435.4	10.7	284.2	5.2	151.2	22.9	835.3	7.6	37.9
	OUT	334.8	15.5	233.1	12.0	101.7	24.3	645.3	13.7	31.9
	NOV	186.2	1.4	155.4	-1.0	30.9	15.8	379.1	-0.9	22.7
	DEC	166.5	5.0	142.8	2.7	23.7	21.3	305.8	-1.9	19.2

Taxas de variación interanuais en % (TVI)



III. ECONOMÍA GALEGA
III.1 PRODUCCIÓN E DEMANDA

III.1.3 Turismo
III.1.3.2 Ocupación en turismo rural

Período	Viaxeiros entrados						Pernoitas totais		Grao de ocupación (%)
	Total		Espaníois		Extranxeiros		Nº de pernoitas	TVI	
	Nº de viaxeiros	TVI	Nº de viaxeiros	TVI	Nº de viaxeiros	TVI			

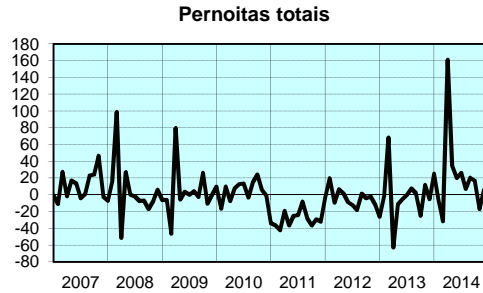
Datos orixinais (miles de persoas ou %)

2008	163.7	-3.3	145.1	-3.4	18.6	-2.2	364.2	-3.1	16.0
2009	176.9	8.1	158.1	8.9	18.9	1.5	369.2	1.4	14.8
2010	193.4	9.3	170.3	7.7	23.2	22.7	389.4	5.5	15.4
2011	143.2	-26.0	122.5	-28.0	20.7	-10.6	295.0	-24.2	11.6
2012	139.5	-2.6	113.7	-7.2	25.8	24.7	270.8	-8.2	10.6
2013	129.2	-7.4	107.0	-5.9	22.2	-14.1	259.2	-4.3	10.4
2014	153.0	18.5	120.8	12.9	32.3	45.5	301.4	16.3	12.2

2012	I	14.5	8.7	13.9	7.0	0.6	76.5	21.3	0.0	3.9
	II	35.7	-2.3	26.4	-11.2	9.3	37.0	62.2	-0.3	9.8
	III	60.6	-6.8	47.1	-12.2	13.4	19.1	141.7	-13.0	21.2
	IV	28.8	1.3	26.3	0.6	2.5	8.7	45.7	-5.9	7.5
2013	I	15.4	6.6	14.8	6.4	0.6	11.2	26.1	22.7	4.7
	II	27.5	-22.9	20.2	-23.5	7.3	-21.4	44.4	-28.5	7.1
	III	61.7	1.8	50.4	6.9	11.3	-15.8	147.8	4.3	22.5
	IV	24.6	-14.7	21.7	-17.6	2.9	15.7	40.8	-10.6	7.0
2014	I	13.1	-14.9	12.4	-16.2	0.7	15.7	21.8	-16.7	4.3
	II	40.5	47.5	28.6	41.8	11.9	63.4	67.9	52.7	11.0
	III	73.5	19.1	56.9	13.0	16.6	46.3	169.5	14.7	26.0
	IV	25.9	5.3	22.8	5.5	3.1	4.0	42.2	3.5	7.4

2014	XAN	2.8	14.8	2.7	12.4	0.1	115.8	4.9	25.0	3.1
	FEB	4.3	-10.8	4.2	-9.9	0.1	-46.6	6.2	-6.5	4.1
	MAR	6.1	-26.2	5.5	-28.9	0.6	18.9	10.7	-31.4	5.7
	ABR	11.4	100.2	9.3	128.2	2.2	31.1	22.7	161.1	11.4
	MAI	14.5	45.6	9.3	28.6	5.2	90.1	21.3	34.3	10.1
	XUÑ	14.6	23.7	10.1	13.1	4.5	56.3	23.9	20.2	11.6
	XUL	21.3	28.1	17.2	27.9	4.1	28.7	49.3	26.2	22.5
	AGO	32.9	12.5	26.9	6.4	5.9	52.4	85.7	7.0	38.8
	SET	19.3	21.9	12.8	10.1	6.5	54.1	34.6	20.4	16.6
	OUT	11.7	15.3	9.2	21.6	2.5	-3.2	18.9	17.2	9.0
	NOV	6.7	-9.1	6.4	-10.5	0.3	42.8	10.2	-16.9	5.5
	DEC	7.5	6.0	7.2	4.4	0.3	75.0	13.2	5.9	7.7

Taxas de variación interanuais en % (TVI)



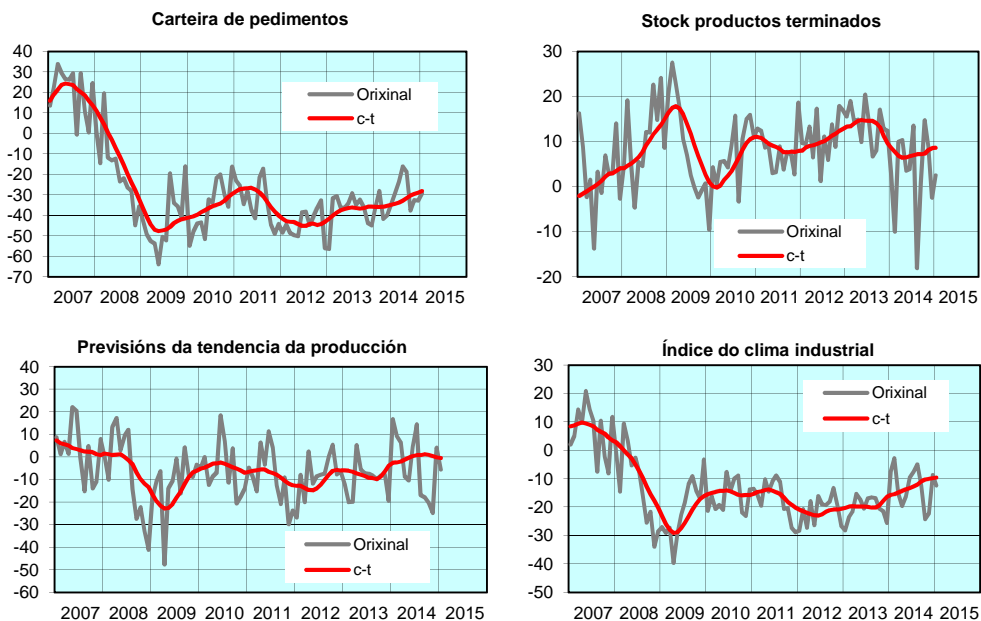
III. ECONOMÍA GALEGA
III.1 PRODUCCIÓN E DEMANDA

III.1.4 Opinións empresariais (Porcentaxes netos de respostas)

Período	Clima industrial								Grao de utilización da capacidade productiva			
	Carteira de pedidos		Stocks de produtos terminados		Previsión sobre a tendencia da produción		Índice do Clima Industrial (ICI)		Bens de consumo	Bens de inversión	Bens intermedios	Conxunto da industria (1)
	Nivel	c-t	Nivel	c-t	Nivel	c-t	Nivel	c-t				
2008	-17.6	-9.8	10.7	8.9	-7.8	-3.4	-12.0	-7.4	79.4	93.8	83.7	85.5
2009	-42.6	-43.8	8.0	11.3	-11.7	-16.0	-20.8	-23.7	74.7	85.5	64.5	74.6
2010	-36.0	-36.0	7.9	4.8	-5.6	-4.3	-16.5	-15.0	68.6	84.7	65.4	72.8
2011	-33.4	-30.8	8.2	8.9	-8.9	-8.0	-16.8	-15.9	63.2	85.1	73.1	74.1
2012	-44.1	-43.8	11.0	10.3	-8.1	-10.9	-21.0	-21.7	68.1	76.3	71.7	72.1
2013	-37.3	-37.4	13.8	13.5	-10.1	-7.5	-20.4	-19.4	69.8	87.4	65.3	73.7
2014	-31.0	-33.3	3.2	7.3	-3.6	-0.4	-12.6	-12.8	77.1	83.3	64.8	74.2
2012 I	-47.2	-42.5	10.8	8.5	-18.3	-13.2	-25.4	-21.4	65.7	86.9	72.1	75.0
2012 II	-46.2	-44.3	8.3	9.5	-6.0	-14.5	-20.2	-22.8	68.8	82.9	74.9	66.0
2012 III	-41.1	-44.5	10.3	10.7	-5.0	-10.1	-18.8	-21.8	65.6	82.1	67.6	71.7
2012 IV	-41.7	-44.0	14.6	12.3	-3.0	-6.0	-19.8	-20.8	72.4	83.1	72.1	75.7
2013 I	-39.6	-40.1	16.4	13.6	-17.4	-6.2	-24.5	-20.0	62.2	78.4	60.7	66.8
2013 II	-35.6	-36.9	15.1	14.7	-2.5	-7.9	-17.7	-19.8	64.6	89.7	70.5	75.0
2013 III	-32.2	-36.5	9.6	14.4	-8.6	-9.5	-16.8	-20.1	73.9	89.0	62.9	74.4
2013 IV	-41.7	-36.0	14.1	11.3	-11.9	-6.3	-22.5	-17.9	78.5	92.4	67.1	78.4
2014 I	-35.2	-35.9	1.0	7.7	10.9	-2.4	-8.4	-15.3	74.1	91.0	67.3	76.8
2014 II	-34.8	-34.9	5.9	6.6	-4.8	-0.4	-15.2	-13.8	78.5	82.3	62.9	73.5
2014 III	-19.5	-32.8	-1.3	7.1	-6.8	0.9	-8.3	-11.9	76.3	75.6	57.3	68.6
2014 IV	-34.4	-29.6	7.1	8.0	-13.7	0.4	-18.4	-10.1	79.6	84.4	71.8	78.0
2015 I	-	-	-	-	-	-	-	-	74.8	86.6	70.5	76.9
2014 XAN	-35.7	-36.0	3.1	8.6	16.7	-2.6	-7.4	-15.7				
2014 FEB	-28.1	-36.0	-10.0	7.7	9.5	-2.5	-2.9	-15.4				
2014 MAR	-41.7	-35.8	10.0	6.8	6.5	-2.1	-15.1	-14.9				
2014 ABR	-40.0	-35.4	10.3	6.4	-8.6	-1.3	-19.6	-14.3				
2014 MAI	-34.9	-34.8	3.6	6.5	-10.4	-0.3	-16.3	-13.8				
2014 XUN	-29.5	-34.4	3.9	6.7	4.5	0.3	-9.6	-13.3				
2014 XULL	-23.6	-33.8	13.5	7.0	14.4	0.7	-7.6	-12.7				
2014 AGO	-16.1	-32.9	-18.1	7.2	-17.0	0.8	-5.0	-12.0				
2014 SET	-18.8	-31.6	0.7	7.2	-17.9	1.2	-12.5	-11.0				
2014 OUT	-37.7	-30.3	14.7	7.4	-20.4	0.9	-24.3	-10.3				
2014 NOV	-32.6	-29.5	9.0	8.1	-24.9	0.4	-22.2	-10.1				
2014 DEC	-32.8	-28.9	-2.5	8.5	4.1	-0.2	-8.7	-9.9				
2015 XAN	-29.3	-28.1	2.5	8.6	-5.6	-0.5	-12.5	-9.5				
2015 FEB	-	-	-	-	-	-	-	-				

(1) sen construción.

Porcentaxes netos de resposta



III. ECONOMÍA GALEGA
III.1 PRODUCCIÓN E DEMANDA

III.1.5 Indicadores do sector da construción

Período	Edific residencial		Edific non residencial		Accesibilidade á vivenda (1) %	Licitación oficial (2)					
	Viv. a construír + rehabil. (licencias)	TVI	Superficie a construír, miles m ² (licencias)	TVI		Total		Edificación		Obra civil	
						Millóns euros	TVI	Millóns euros	TVI	Millóns euros	TVI

Niveis

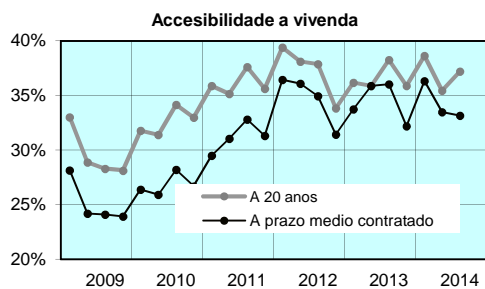
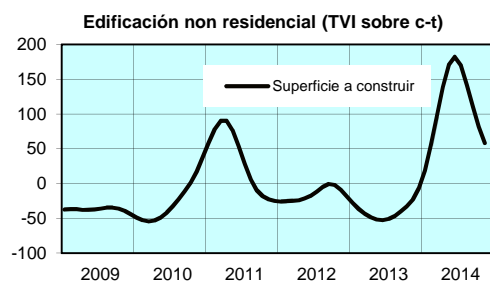
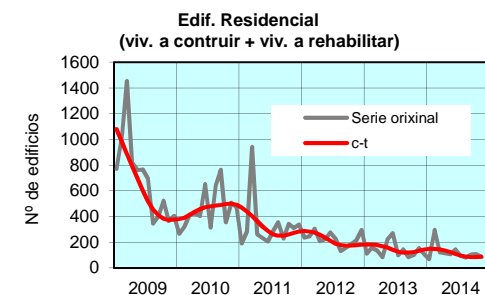
2008		24832	-47.1	708.7	-22.5	36.5	2663.2	19.9	356.0	-47.0	2307.2	48.9
2009		8342	-66.4	482.1	-32.0	29.6	2410.9	-9.5	315.1	-11.5	2095.8	-9.2
2010		5540	-33.6	305.9	-36.5	32.6	1176.0	-51.2	375.9	19.3	800.1	-61.8
2011		3985	-28.1	360.6	17.9	36.1	1342.2	14.1	141.4	-62.4	1200.8	50.1
2012		2711	-32.0	344.6	-4.4	37.3	1031.7	-23.1	57.5	-59.3	974.2	-18.9
2013		1681	-38.0	202.2	-41.3	36.6	445.3	-56.8	174.1	202.6	271.2	-72.2
2014		-	-	-	-	-	426.3	-4.3	142.0	-18.4	284.2	4.8

2012	I	788	-44.4	117.0	35.2	39.4	184.3	-2.8	8.2	-84.3	176.2	28.1
	II	708	0.7	62.3	-44.1	38.1	759.0	211.9	17.5	-54.7	741.6	262.1
	III	517	-40.6	61.7	-29.9	37.9	25.4	-93.0	6.6	-57.2	18.8	-94.6
	IV	698	-29.8	103.6	38.9	33.8	62.9	-88.5	25.3	-28.3	37.6	-92.6
2013	I	408	-48.3	52.6	-55.1	36.2	143.4	-22.2	81.1	894.4	62.3	-64.6
	II	579	-18.3	35.0	-43.8	35.9	99.4	-86.9	29.8	71.0	69.6	-90.6
	III	328	-36.6	36.5	-40.9	38.3	99.5	291.8	32.4	389.9	67.0	257.2
	IV	367	-47.4	78.2	-24.5	35.9	103.0	63.7	30.7	21.4	72.3	92.1
2014	I	489	19.9	54.2	3.1	38.6	75.5	-47.4	20.7	-74.5	54.9	-12.0
	II	366	-36.8	143.6	310.3	35.5	111.9	12.6	47.9	60.7	64.0	-8.1
	III	281	-14.2	75.5	107.0	37.2	149.7	50.5	46.0	41.7	103.7	54.7
	IV	-	-	-	-	-	89.2	-13.5	27.4	-10.7	61.7	-14.6

2014	XAN	71	-37.4	11.0	-36.0		20.3	-71.9	4.7	-76.6	15.6	-70.1
	FEB	296	86.2	18.3	15.6		37.4	415.1	6.1	144.5	31.3	558.1
	MAR	122	-9.9	25.0	27.1		17.7	-72.2	9.8	-83.3	8.0	48.7
	ABR	116	38.3	17.4	54.6		40.8	44.8	12.4	-13.6	28.4	105.1
	MAI	106	-52.5	31.7	167.4		43.0	10.1	20.6	112.2	22.4	-23.7
	XUÑ	144	-47.0	94.4	696.8		28.1	-12.6	15.0	158.0	13.1	-50.2
	XULL	94	-5.8	24.2	78.2		104.6	154.7	27.9	17.2	76.7	344.7
	AGO	82	-43.0	28.6	612.8		23.9	-35.2	9.2	202.5	14.7	-56.7
	SET	105	24.8	22.8	20.5		21.2	-1.5	8.8	58.5	12.4	-22.5
	OUT	106	4.3	36.4	109.8		25.9	-14.8	4.7	-61.6	21.2	16.7
	NOV	86	-44.7	22.5	-30.3		23.6	-47.0	12.2	76.6	11.5	-69.6
	DEC	-	-	-	-		39.7	41.3	10.6	-9.1	29.1	77.0
2015	XAN	-	-	-	-		-	-	-	-	-	-

(1) Definida como a porcentaxe que representa sobre o salario dun traballador galego a cuota anual -amortización do principal e xuros- dun préstamo hipotecario concertado a 20 anos ó tipo de xuro vixente, para financiar o 80% do valor dunha vivenda media en Galicia.

(2) Fonte: Ministerio de Fomento.



III. ECONOMÍA GALEGA

III.1 PRODUCCIÓN E DEMANDA

III.1.6 Índice de produción industrial. Base 2010. CNAE-09

Período	Índice xeral	Por destino económico						B	C	D	E			
		Bens de consumo		Bens de equipo	Bens intermedios	Energía								
		duradeiro	non durad.											

Niveis

2008	118.0	114.0	125.4	113.2	140.4	117.9	100.7	106.6	121.8	100.1	-
2009	100.1	102.7	108.1	102.3	100.7	100.3	96.0	92.5	100.8	97.5	-
2010	100.0	100.0	100.0	100.0	100.0	100.0	100.0	100.0	100.0	100.0	-
2011	93.4	101.6	97.8	101.9	84.4	96.0	94.0	73.9	93.5	94.5	104.6
2012	87.1	96.5	83.3	97.5	71.1	87.1	102.2	55.1	84.6	103.3	106.1
2013	89.9	103.0	74.4	105.2	71.5	83.4	114.8	41.5	85.7	117.0	110.8
2014	86.3	101.1	68.7	103.6	63.6	83.2	110.8	43.6	82.0	112.3	121.1

2012	I	88.4	91.4	82.3	92.1	74.9	91.4	103.0	70.5	85.6	105.8	96.8
	II	87.4	100.3	77.1	102.1	70.8	90.4	93.7	51.8	86.4	95.6	105.1
	III	86.2	100.8	87.9	101.8	69.1	83.2	101.0	51.2	84.2	98.3	119.0
	IV	86.4	93.5	86.1	94.0	69.5	83.4	111.1	46.8	82.1	113.4	103.4
2013	I	89.2	90.1	73.6	91.3	71.6	81.4	131.5	37.0	81.6	137.3	94.5
	II	93.4	109.4	77.2	111.8	77.9	89.7	104.9	44.8	92.1	105.1	111.7
	III	88.6	115.1	77.0	118.0	65.2	81.8	104.6	44.7	86.4	102.6	129.5
	IV	88.3	97.4	69.9	99.5	71.2	80.7	118.3	39.5	82.8	123.2	107.4
2014	I	89.1	96.8	64.2	99.3	66.7	83.1	127.5	33.4	81.8	135.1	101.3
	II	87.0	104.1	67.7	106.9	67.9	85.4	99.6	43.8	85.3	98.0	127.6
	III	83.6	107.3	69.0	110.2	57.7	81.4	99.9	53.2	80.9	97.5	135.6
	IV	85.6	96.3	73.7	98.0	62.1	82.8	116.3	43.9	80.0	118.5	119.8

2014	XAN	88.5	95.1	54.8	98.2	65.9	79.0	134.9	30.1	79.4	145.1	102.6
	FEB	89.1	98.0	67.3	100.4	66.3	82.4	128.0	30.6	81.8	136.2	96.7
	MAR	89.7	97.4	70.4	99.5	67.8	88.1	119.7	39.5	84.3	124.0	104.7
	ABR	87.4	106.0	67.3	109.0	68.7	83.7	100.6	37.0	85.8	100.1	107.4
	MAI	88.6	103.9	65.0	106.9	69.2	86.9	104.6	44.9	86.4	102.3	133.5
	XUÑ	85.0	102.4	70.9	104.9	66.0	85.4	93.6	49.6	83.6	91.7	141.9
	XULL	87.9	111.6	73.3	114.5	65.3	86.6	97.5	54.4	86.6	94.8	142.6
	AGO	73.0	93.9	59.0	96.6	42.8	70.1	102.0	50.6	68.0	98.4	133.9
	SET	89.7	116.5	74.8	119.7	65.1	87.3	100.2	54.6	88.1	99.2	130.2
	OUT	87.4	104.9	77.1	107.1	65.4	91.6	94.9	52.6	86.6	92.5	124.1
	NOV	88.4	96.8	82.0	98.0	63.1	84.8	126.5	45.2	81.3	130.3	115.5
	DEC	81.0	87.1	62.1	89.0	57.9	72.0	127.6	34.0	72.1	132.7	119.8

Taxas de variación interanuais en % (TVI)

2006		7.6	8.1	9.2	8.0	11.1	3.2	9.8	4.0	6.5	15.1	-
2007		5.6	4.1	-6.9	5.3	14.6	2.5	1.4	1.4	6.6	0.5	-
2008		-6.3	-5.6	-15.6	-4.6	-3.0	-7.8	-9.1	-19.7	-5.7	-7.7	-
2009		-15.2	-10.0	-13.8	-9.6	-28.3	-14.9	-4.7	-13.3	-17.3	-2.5	-
2010		-0.1	-2.6	-7.5	-2.2	-0.7	-0.3	4.2	8.1	-0.8	2.5	-
2011		-6.6	1.6	-2.2	1.9	-15.6	-4.0	-6.0	-26.1	-6.5	-5.5	-
2012		-6.8	-5.0	-14.8	-4.3	-15.7	-9.2	8.7	-25.5	-9.5	9.2	1.4
2013		3.2	6.7	-10.7	7.8	0.6	-4.2	12.4	-24.6	1.3	13.4	4.4
2014		-4.0	-1.8	-7.8	-1.5	-11.0	-0.3	-3.5	5.0	-4.3	-4.1	9.3

2012	I	-13.2	-6.3	-5.7	-6.3	-22.3	-10.1	-12.3	-3.8	-13.5	-14.2	14.2
	II	-6.9	-3.1	-24.5	-1.5	-17.8	-11.3	16.0	-38.6	-10.5	21.8	-3.1
	III	-2.4	-7.1	-11.1	-6.8	-10.2	-6.9	27.8	-32.4	-6.9	33.3	-13.4
	IV	-3.7	-3.3	-16.4	-2.3	-10.7	-8.2	12.4	-24.7	-6.6	10.5	17.5
2013	I	0.9	-1.5	-10.5	-0.9	-4.4	-10.9	27.7	-47.5	-4.7	29.8	-2.4
	II	6.9	9.0	0.1	9.5	10.0	-0.8	12.0	-13.5	6.5	10.0	6.2
	III	2.8	14.2	-12.4	16.0	-5.6	-1.6	3.6	-12.7	2.6	4.4	8.8
	IV	2.2	4.2	-18.8	5.8	2.4	-3.3	6.5	-15.4	0.8	8.6	3.9
2014	I	-0.1	7.5	-12.8	8.8	-6.9	2.1	-3.0	-9.8	0.3	-1.6	7.3
	II	-6.9	-4.8	-12.3	-4.4	-12.8	-4.9	-5.1	-2.1	-7.4	-6.7	14.2
	III	-5.7	-6.8	-10.4	-6.6	-11.5	-0.6	-4.5	19.0	-6.4	-5.0	4.7
	IV	-3.1	-1.1	5.4	-1.5	-12.7	2.6	-1.7	11.1	-3.4	-3.8	11.5

2014	XAN	-3.2	7.2	-12.1	8.2	-10.1	-3.8	-5.0	-35.6	-3.1	-2.9	6.2
	FEB	1.0	8.7	-3.4	9.4	-7.5	2.4	0.5	-10.6	0.6	2.4	6.4
	MAR	1.9	6.8	-20.8	8.8	-3.0	7.7	-4.3	31.1	3.4	-4.3	9.2
	ABR	-8.1	-3.8	-23.3	-2.6	-10.1	-4.8	-15.3	-16.5	-5.9	-18.2	8.4
	MAI	-8.6	-9.7	-21.2	-9.0	-15.8	-5.7	-1.5	-9.0	-9.9	-3.9	13.2
	XUÑ	-3.7	-0.4	15.4	-1.1	-12.3	-4.1	4.3	21.9	-6.1	6.1	20.1
	XULL	-8.1	-7.5	-16.1	-7.1	-12.2	-1.8	-12.3	16.8	-7.7	-12.8	9.7
	AGO	-7.9	-17.5	-13.4	-17.7	-8.5	-0.5	-1.5	14.8	-9.5	-3.6	1.7
	SET	-1.3	5.2	-1.1	5.5	-12.8	0.6	1.1	25.5	-2.3	2.3	2.7
	OUT	-6.8	-3.1	-7.2	-2.8	-18.1	2.1	-9.5	7.6	-6.2	-11.7	9.4
	NOV	-3.3	-6.6	26.0	-8.1	-15.8	4.6	5.4	1.4	-5.4	3.7	8.1
	DEC	1.4	8.5	0.8	8.9	-1.6	1.1	-1.9	35.0	2.9	-4.6	17.4

B Industrias extractivas
 C Industria manufacturera
 D Fornecemento de enerxía eléctrica, gas, vapor e aire acondicionado
 E Fornecemento de auga, actividades de saneamento, xestión de residuos e descontaminación

III. ECONOMÍA GALEGA

III.1 PRODUCCIÓN E DEMANDA

III.1.7 Outros indicadores (1/2)

Período	Renda salarial real (%)	Matriculacións				Consumo gasóleo		Comercio polo miúdo (2)	
		Turismos		Vehículos carga (1)		Serie orixinal	c-t	Serie orixinal	c-t
		Serie orixinal	c-t	Serie orixinal	c-t				
		Nº turismos		Nº vehículos		Miles de Tm.		Índice base 2005	

Niveis

2008		58727	57852	8711	8514	2397.0	2386.4	101.9	101.6
2009		59821	59884	6095	6014	2316.8	2315.2	100.1	100.4
2010		51844	50709	5776	5768	2303.6	2288.7	100.0	99.6
2011		33955	33638	4557	4446	2131.8	2136.3	93.6	92.0
2012		28676	28973	3313	3284	2088.5	2072.3	89.5	84.4
2013		31289	31361	3410	3470	1917.8	1908.2	85.2	85.5
2014		36048	36548	4112	4316	1847.6	1848.5	85.4	84.7
2012	I	7303	7797	846	897	549.4	526.6	90.5	92.6
	II	7620	7378	915	823	499.6	527.6	87.9	91.5
	III	7268	6927	781	794	503.3	519.8	92.9	87.7
	IV	6485	6872	771	770	536.1	498.4	86.9	84.4
2013	I	6919	7130	711	759	481.7	481.0	80.6	84.1
	II	7565	7567	820	801	463.3	477.0	81.9	85.3
	III	7900	8100	767	904	462.1	478.3	90.9	85.8
	IV	8905	8564	1112	1006	510.7	472.0	87.5	85.5
2014	I	8200	8754	1007	1050	465.4	463.2	81.1	85.3
	II	8838	8836	1083	1059	438.5	461.3	81.9	85.1
	III	8726	9203	945	1072	450.1	463.2	89.2	84.7
	IV	10284	9753	1077	1136	493.5	460.8	89.4	84.7
2014	XAN	2481	2916	312	349	154.7	155.2	90.1	85.4
	FEB	2823	2920	331	350	153.8	154.3	74.2	85.3
	MAR	2896	2918	364	351	156.9	153.7	78.9	85.3
	ABR	2828	2924	369	351	149.9	153.6	81.6	85.2
	MAI	3144	2942	358	353	148.3	153.7	82.5	85.1
	XUN	2866	2971	356	354	140.3	154.0	81.6	85.0
	XUL	3270	3012	338	354	153.0	154.3	92.1	84.8
	AGO	2594	3065	269	356	146.5	154.5	92.2	84.7
	SET	2862	3126	338	361	150.7	154.4	83.2	84.6
	OUT	3579	3192	464	368	166.6	154.1	84.2	84.6
	NOV	3021	3254	341	378	152.2	153.6	81.4	84.6
	DEC	3684	3307	272	389	174.8	153.1	102.7	84.8
2015	XAN	3214	3352	459	401	-	-	-	-

(1) Inclúe camiões, furgonetas e tractores industriais.

(2) corrixido de efecto estacional e de calendario e deflactada.

Taxas de variación interanuais en % (TVI)

2008		0.6	-28.4	-28.3	-38.0	-37.8	-0.3	-0.7	-5.4	-5.5
2009		-0.3	1.9	3.5	-30.0	-29.4	-3.3	-3.0	-1.8	-1.1
2010		-1.9	-13.3	-15.3	-5.2	-4.1	-0.6	-1.1	-0.1	-0.8
2011		-3.1	-34.5	-33.7	-21.1	-22.9	-7.5	-6.7	-6.4	-7.6
2012		-5.1	-15.5	-13.9	-27.3	-26.1	-2.0	-3.0	-4.4	-8.3
2013		-3.8	9.1	8.2	2.9	5.7	-8.2	-7.9	-4.8	1.3
2014		-	15.2	16.5	20.6	24.4	-3.7	-3.1	0.2	-1.0
2012	I	-4.1	-15.1	-11.5	-31.1	-24.5	-1.8	-3.2	-1.2	-3.6
	II	-5.2	-11.0	-12.5	-23.6	-27.9	-1.9	-1.2	-3.3	-3.2
	III	-5.3	-11.7	-16.2	-24.3	-27.8	-1.7	-2.0	-5.1	-5.2
	IV	-5.6	-24.3	-15.5	-29.9	-24.1	-2.7	-5.6	-7.9	-8.3
2013	I	-5.0	-5.3	-8.6	-16.0	-15.4	-12.3	-8.7	-11.0	-9.2
	II	-4.2	-0.7	2.6	-10.4	-2.6	-7.3	-9.6	-6.8	-6.7
	III	-3.9	8.7	16.9	-1.8	13.8	-8.2	-8.0	-2.2	-2.2
	IV	-1.9	37.3	24.6	44.2	30.6	-4.8	-5.3	0.7	1.3
2014	I	-0.4	18.5	22.8	41.6	38.3	-3.4	-3.7	0.6	1.5
	II	0.5	16.8	16.8	32.1	32.1	-5.4	-3.3	-0.1	-0.2
	III	2.0	10.5	13.6	23.2	18.6	-2.6	-3.2	-1.9	-1.3
	IV	-	15.5	13.9	-3.1	12.9	-3.4	-2.4	2.2	-1.0
2014	XAN	4.0	24.5	35.7	38.0	-5.8	-4.0	3.6	1.9	
	FEB	29.4	23.0	39.7	38.8	0.3	-3.7	0.7	1.5	
	MAR	23.2	20.9	49.2	38.1	-4.4	-3.4	-2.6	1.0	
	ABR	11.6	18.7	36.7	36.1	-8.6	-3.3	2.4	0.3	
	MAI	23.9	16.7	28.8	32.7	-5.4	-3.3	-1.3	-0.3	
	XUN	14.9	15.0	30.9	27.9	-1.5	-3.3	-1.2	-0.8	
	XUL	5.2	14.0	-2.0	22.8	-3.4	-3.3	-3.2	-1.1	
	AGO	9.7	13.5	41.6	18.3	-6.0	-3.2	-1.8	-1.3	
	SET	17.8	13.4	45.7	15.0	1.9	-3.0	-0.4	-1.3	
	OUT	20.9	13.6	22.4	13.1	-3.2	-2.7	1.1	-1.2	
	NOV	10.9	13.9	-10.0	12.5	-6.1	-2.4	0.8	-1.0	
	DEC	14.4	14.2	-23.2	13.1	-1.0	-2.0	4.4	-0.8	
2015	XAN	29.5	14.9	47.1	15.0	-	-	-	-	

III. ECONOMÍA GALEGA

III.1 PRODUCCIÓN E DEMANDA

III.1.8 Outros indicadores (2/2)

Período	Importación bens de consumo		Importación bens de investimento		Transporte aéreo de pasaxeiros		Transporte marítimo mercadorías (1)	
	Serie orixinal	c-t	Serie orixinal	c-t	Serie orixinal	c-t	Serie orixinal	c-t
	Millóns de euros de 2010				Miles de persoas		Miles de Tm.	

Niveis

2008		3902.0	3930.6	500.2	471.2	4287.3	4239.6	32628.7	32472.4
2009		4391.5	3761.6	421.6	401.8	4085.2	4097.2	29871.4	29667.9
2010		3437.4	3377.1	334.3	341.8	4336.5	4344.8	29134.5	29335.0
2011		3182.8	3193.6	338.6	337.6	4430.3	4407.2	29969.1	30142.2
2012		3331.9	3285.2	359.6	343.7	3851.1	3823.3	33100.6	33137.7
2013		3679.4	3705.9	323.7	347.1	3576.8	3569.3	30603.7	30582.9
2013		4457.9	4427.0	543.7	513.0	3736.5	3754.6	31307.3	31261.2

2013	I	777.2	859.0	65.8	80.5	746.7	893.8	7687.6	7799.1
	II	825.5	826.5	66.3	78.5	919.9	886.5	7253.0	7536.1
	III	902.1	912.0	74.3	87.1	1077.7	893.1	8095.8	7568.6
	IV	1174.7	1108.4	117.3	101.0	832.5	895.9	7567.3	7679.0
2014	I	1012.6	1103.7	114.2	114.6	730.5	912.1	7823.6	7702.3
	II	1172.0	1119.3	139.2	128.3	997.8	942.9	7480.7	7689.3
	III	1179.6	1110.4	157.3	136.9	1136.9	956.9	7636.2	7829.3
	IV	1093.7	1093.6	133.0	133.1	871.3	942.8	8366.9	8040.2

2014	XAN	369.9	366.9	33.3	36.3	232.4	301.1	2498.7	2571.1
	FEB	235.8	367.0	30.4	38.3	220.1	303.8	2067.4	2568.6
	MAR	406.8	369.8	50.6	40.1	278.0	307.2	3257.5	2562.6
	ABR	377.3	372.5	39.7	41.5	325.6	311.0	2373.1	2559.6
	MAI	390.3	373.5	49.4	42.9	324.7	314.6	2458.0	2560.7
	XUÑ	404.5	373.3	50.1	43.9	347.5	317.3	2649.7	2569.0
	XUL	442.4	371.7	35.9	44.7	386.7	319.0	2540.1	2586.1
	AGO	313.0	370.0	43.9	45.9	397.0	319.4	2547.4	2608.8
	SET	424.1	368.6	77.5	46.3	353.2	318.5	2548.7	2634.4
	OUT	383.0	366.6	45.3	45.3	331.8	316.6	2956.5	2659.2
	NOV	372.9	364.5	40.8	44.1	269.2	314.3	2521.9	2681.5
	DEC	337.8	362.5	46.9	43.6	270.3	312.0	2888.5	2699.6
2015	XAN	-	-	-	-	-	-	-	-

(1) Mercadorías cargadas + descargadas.

(*) Importacións: datos acumulados no que vai de ano ou trimestre.

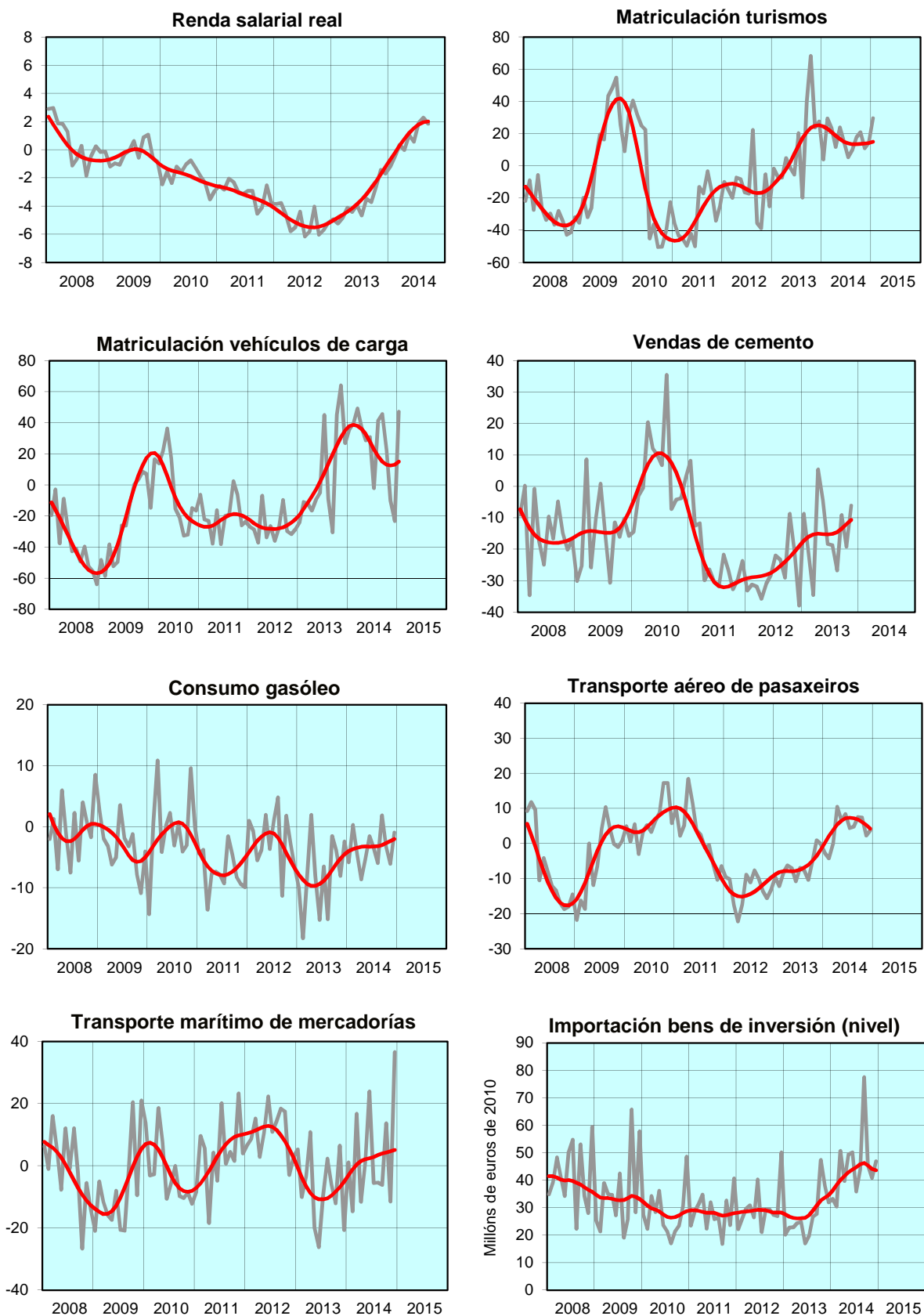
Taxas de variación interanuais en % (TVI)

2008		-10.7	-11.0	1.6	-13.3	-8.1	-9.8	-1.3	-1.8
2009		12.5	-3.9	-15.7	-7.4	-4.7	-3.4	-8.5	-8.6
2010		-21.7	-7.0	-20.7	-13.2	6.2	6.0	-2.5	-1.1
2011		-7.4	-7.8	1.3	-2.7	2.2	1.4	2.9	2.8
2012		4.7	14.4	6.2	0.7	-13.1	-13.2	10.4	9.9
2013		10.4	25.6	-10.0	22.8	-7.1	-6.6	-7.5	-7.7
2014		40.6	26.5	65.0	31.6	4.5	5.2	2.3	2.2

2013	I	15.7	13.3	-15.3	2.1	-9.9	-8.3	-3.1	-3.8
	II	2.3	22.0	-32.1	-1.9	-8.1	-7.9	-13.3	-9.9
	III	5.2	20.2	-7.0	0.2	-8.2	-6.8	-4.7	-10.3
	IV	18.0	18.0	12.4	-0.1	-1.7	-3.4	-8.9	-6.8
2014	I	30.3	6.0	73.7	7.0	-2.2	2.0	1.8	-1.2
	II	42.0	0.1	110.0	9.0	8.5	6.4	3.1	2.0
	III	30.8	-3.1	111.7	-0.7	5.5	7.1	-5.7	3.4
	IV	-20.4	-4.8	-4.5	-3.4	4.7	5.2	10.6	4.7

2014	XAN	40.6	26.5	65.0	31.6	-2.7	0.2	1.0	-3.0
	FEB	-8.2	27.3	33.5	37.4	-4.2	2.1	-14.7	-1.1
	MAR	58.2	28.5	121.5	42.4	0.0	3.9	16.7	0.4
	ABR	31.3	33.7	62.8	58.9	10.5	5.4	-11.6	1.6
	MAI	42.3	34.7	98.5	61.7	6.5	6.5	1.1	2.1
	XUÑ	53.4	35.4	194.4	63.5	8.4	7.2	23.9	2.5
	XUL	47.9	37.3	81.5	63.8	4.4	7.4	-5.6	2.9
	AGO	22.5	37.2	64.0	61.1	4.8	7.2	-5.4	3.5
	SET	22.1	21.7	179.0	57.2	7.5	6.8	-6.1	4.0
	OUT	-20.4	-1.2	-4.5	38.9	7.4	6.2	13.6	4.3
	NOV	8.1	-1.3	7.4	34.8	2.3	5.3	-11.5	4.7
	DEC	-3.0	-1.3	46.8	31.8	3.8	4.2	36.6	5.1
2015	XAN	-	-	-	-	-	-	-	-

Taxas de variación interanuais en % (TVI)



III. ECONOMÍA GALEGA

III.2 MERCADO DE TRABAJO. Base poboacional 2011

III.2.1 Balance do mercado de traballo.

Período	Poboación > 16 anos	Poboación activa (2)	Ocupados	Asalariados	Parados (2)	Taxa de actividade	Taxa de ocupación	Taxa de paro
	Miles de persoas					Porcentaxe		

Datos orixinais

2008		2401.1	1314.8	1201.2	920.9	113.6	54.8	50.0	8.6
2009		2407.0	1319.5	1155.4	898.0	164.1	54.8	48.0	12.4
2010		2406.9	1304.4	1104.5	865.4	199.9	54.2	45.9	15.3
2011		2403.5	1316.6	1089.3	852.3	227.2	54.8	45.3	17.3
2012		2395.1	1317.7	1047.2	810.1	270.5	55.0	43.7	20.5
2013		2382.3	1290.9	1006.4	775.3	284.6	54.2	42.2	22.0
2014		2368.6	1273.9	998.0	779.5	275.8	53.8	42.1	21.6

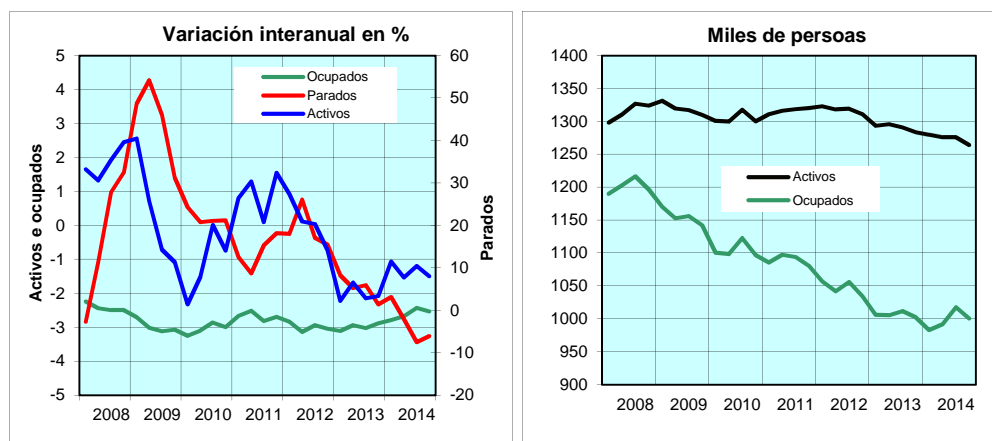
2012	I	2399.2	1322.9	1057.0	823.5	265.9	55.1	44.1	20.1
	II	2395.7	1317.9	1042.0	806.8	275.9	55.0	43.5	20.9
	III	2393.8	1319.3	1055.8	816.7	263.4	55.1	44.1	20.0
	IV	2391.8	1310.7	1033.8	793.5	276.9	54.8	43.2	21.1
2013	I	2388.1	1293.5	1005.6	773.9	287.9	54.2	42.1	22.3
	II	2384.1	1295.7	1005.4	768.4	290.3	54.3	42.2	22.4
	III	2379.7	1291.0	1011.8	780.6	279.1	54.3	42.5	21.6
	IV	2377.2	1283.5	1002.6	778.3	280.9	54.0	42.2	21.9
2014	I	2373.3	1279.8	982.8	763.9	296.9	53.9	41.4	23.2
	II	2369.1	1275.8	991.5	772.9	284.3	53.9	41.9	22.3
	III	2367.6	1275.6	1017.3	795.1	258.3	53.9	43.0	20.2
	IV	2364.5	1264.3	1000.4	786.1	263.8	53.5	42.3	20.9

Taxas de variación interanuais en % (1)

2008		0.4	1.8	0.7	0.0	16.2	0.8	0.1	1.1
2009		0.2	0.4	-3.8	-2.5	44.5	0.1	-2.0	3.8
2010		0.0	-1.1	-4.4	-3.6	21.8	-0.6	-2.1	2.9
2011		-0.1	0.9	-1.4	-1.5	13.7	0.6	-0.6	1.9
2012		-0.3	0.1	-3.9	-4.9	19.1	0.2	-1.6	3.3
2013		-0.5	-2.0	-3.9	-4.3	5.2	-0.8	-1.5	1.5
2014		-0.6	-1.3	-0.8	0.5	-3.1	-0.4	-0.1	-0.4

2012	I	-0.2	0.9	-2.6	-2.6	18.0	0.6	-1.1	2.9
	II	-0.3	0.1	-5.1	-6.1	26.0	0.2	-2.2	4.3
	III	-0.4	0.0	-3.5	-4.8	17.1	0.2	-1.4	2.9
	IV	-0.4	-0.7	-4.3	-6.3	15.5	-0.1	-1.7	3.0
2013	I	-0.5	-2.2	-4.9	-6.0	8.3	-1.0	-1.9	2.2
	II	-0.5	-1.7	-3.5	-4.8	5.2	-0.7	-1.3	1.5
	III	-0.6	-2.1	-4.2	-4.4	6.0	-0.9	-1.6	1.7
	IV	-0.6	-2.1	-3.0	-1.9	1.4	-0.8	-1.0	0.8
2014	I	-0.6	-1.1	-2.3	-1.3	3.1	-0.2	-0.7	0.9
	II	-0.6	-1.5	-1.4	0.6	-2.1	-0.5	-0.3	-0.1
	III	-0.5	-1.2	0.5	1.9	-7.5	-0.4	0.4	-1.4
	IV	-0.5	-1.5	-0.2	1.0	-6.1	-0.5	0.1	-1.0

(1) Nas tres últimas columnas, diferencias interanuais.



III. ECONOMÍA GALEGA

III.2 MERCADO DE TRABALLO. Base poboacional 2011.

III.2.2 Ocupados por xénero, sector e situación profesional

Período	Por xénero		Por sectores					Por situación profesional	
	Homes	Mulleres	Primario	Non primario			Asalariados	Non asalariados	
				Total	Industria	Construc.			Servicios

Datos orixinais (en miles de persoas)

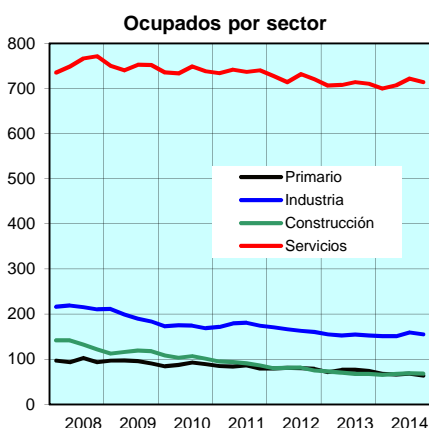
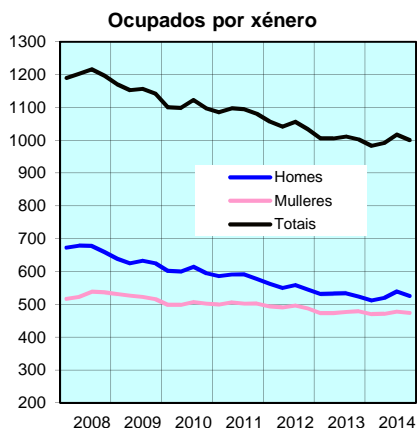
2008		672.3	528.9	96.6	1104.7	215.1	134.2	755.4	920.9	280.3
2009		630.8	524.6	94.8	1060.6	195.7	116.3	748.6	898.0	257.4
2010		602.7	501.8	88.3	1016.2	172.7	104.9	738.7	865.4	239.1
2011		586.6	502.7	83.5	1005.8	176.4	91.3	738.1	852.3	237.0
2012		554.6	492.6	79.6	967.6	164.9	79.3	723.4	810.1	237.0
2013		530.6	475.8	74.4	932.0	153.4	69.3	709.4	775.3	231.1
2014		524.3	473.7	66.1	931.9	154.1	67.2	710.7	779.5	218.5
2012	I	563.2	493.8	79.5	977.6	170.4	80.1	727.1	823.5	233.5
	II	550.7	491.3	80.5	961.4	166.6	80.5	714.3	806.8	235.2
	III	558.7	497.1	79.9	976.0	162.5	81.5	732.0	816.7	239.1
	IV	545.6	488.2	78.3	955.5	160.0	75.2	720.3	793.5	240.3
2013	I	532.0	473.6	71.3	934.3	155.3	73.0	706.0	773.9	231.7
	II	532.5	472.9	76.4	929.0	152.0	69.7	707.3	768.4	237.0
	III	534.1	477.7	76.5	935.3	154.0	67.2	714.1	780.6	231.2
	IV	523.6	479.0	73.2	929.5	152.1	67.1	710.3	778.3	224.3
2014	I	511.9	470.9	67.5	915.3	150.5	65.3	699.5	763.9	218.9
	II	520.0	471.5	65.9	925.6	151.1	67.3	707.2	772.9	218.6
	III	539.5	477.8	67.7	949.7	159.2	68.4	722.1	795.1	222.2
	IV	525.7	474.7	63.3	937.1	155.4	67.6	714.1	786.1	214.3

Taxas de variación interanuais en % (TVI)

2008		-	-	-	-	-	-	-	0.0	3.1
2009		-6.2	-0.8	-1.8	-4.0	-9.0	-13.4	-0.9	-2.5	-8.2
2010		-4.5	-4.3	-6.9	-4.2	-11.8	-9.8	-1.3	-3.6	-7.1
2011		-2.7	0.2	-5.4	-1.0	2.1	-12.9	-0.1	-1.5	-0.9
2012		-5.5	-2.0	-4.7	-3.8	-6.5	-13.1	-2.0	-4.9	0.0
2013		-4.3	-3.4	-6.5	-3.7	-7.0	-12.7	-1.9	-4.3	-2.5
2014		-1.2	-0.4	-11.1	0.0	0.5	-3.0	0.2	0.5	-5.4

2012	I	-3.9	-1.1	-6.1	-2.3	-0.6	-15.8	-1.0	-2.6	-2.8
	II	-6.9	-2.9	-3.7	-5.2	-7.1	-13.6	-3.7	-6.1	-1.4
	III	-5.5	-1.2	-7.3	-3.1	-10.1	-9.9	-0.6	-4.8	1.3
	IV	-5.6	-2.9	-1.4	-4.5	-8.0	-13.1	-2.7	-6.3	3.0
2013	I	-5.5	-4.1	-10.3	-4.4	-8.9	-8.9	-2.9	-6.0	-0.8
	II	-3.3	-3.7	-5.1	-3.4	-8.8	-13.4	-1.0	-4.8	0.8
	III	-4.4	-3.9	-4.3	-4.2	-5.2	-17.5	-2.4	-4.4	-3.3
	IV	-4.0	-1.9	-6.5	-2.7	-4.9	-10.8	-1.4	-1.9	-6.7
2014	I	-3.8	-0.6	-5.3	-2.0	-3.1	-10.5	-0.9	-1.3	-5.5
	II	-2.3	-0.3	-13.7	-0.4	-0.6	-3.4	0.0	0.6	-7.8
	III	1.0	0.0	-11.5	1.5	3.4	1.8	1.1	1.9	-3.9
	IV	0.4	-0.9	-13.5	0.8	2.2	0.7	0.5	1.0	-4.5

Miles de persoas



III. ECONOMÍA GALEGA

III.2 MERCADO DE TRABALLO. Base poboacional 2011.

III.2.3 Parados por xénero, idade e tempo de búsqueda de emprego

Período	Total	Por xénero		Por grupos de idade			Por tempo de búsqueda de emprego			
		Homes	Mulleres	16-24	25-54	55 e máis	Menos 6 meses	Entre 6 meses e 1 ano	Entre 1 e 2 anos	2 ou máis anos

Datos orixinais (en miles de persoas)

2008	113.6	53.4	60.2	23.6	80.3	9.7	54.4	13.2	14.2	16.8
2009	164.1	83.3	80.9	32.6	118.5	13.1	71.0	32.6	25.9	23.2
2010	199.9	103.0	96.9	33.3	150.2	16.4	67.3	41.9	46.1	35.3
2011	227.2	116.4	110.8	32.7	174.8	19.8	72.2	36.8	54.8	52.0
2012	270.5	145.6	124.9	37.6	208.1	24.9	74.5	47.9	59.7	76.3
2013	284.6	152.5	132.1	37.0	218.6	29.1	66.6	42.8	63.1	100.2
2014	275.8	144.6	131.2	34.2	212.0	29.7	61.3	37.2	54.3	109.9

2012	I	265.9	139.4	126.5	35.5	206.4	24.0	80.8	45.7	58.8	70.8
	II	275.9	152.5	123.4	37.0	214.1	24.7	75.9	50.2	58.4	76.8
	III	263.4	142.3	121.1	40.4	198.4	24.7	65.9	49.5	60.4	72.8
	IV	276.9	148.2	128.7	37.4	213.4	26.0	75.3	46.3	61.2	84.7
2013	I	287.9	154.0	133.9	36.9	225.5	25.4	69.8	47.6	65.9	93.2
	II	290.3	153.6	136.7	37.8	224.1	28.5	63.5	48.3	63.4	102.3
	III	279.1	150.4	128.8	38.0	210.5	30.7	64.5	41.6	61.1	98.2
	IV	280.9	152.0	128.9	35.3	214.1	31.6	68.4	33.8	61.8	107.2
2014	I	296.9	158.6	138.3	35.0	232.7	29.2	69.4	43.2	63.4	109.0
	II	284.3	147.0	137.4	36.1	217.6	30.7	55.9	44.4	53.8	118.1
	III	258.3	134.9	123.3	34.3	193.3	30.7	49.0	35.2	51.2	105.2
	IV	263.8	138.0	125.9	31.4	204.3	28.2	71.0	26.1	48.7	107.1

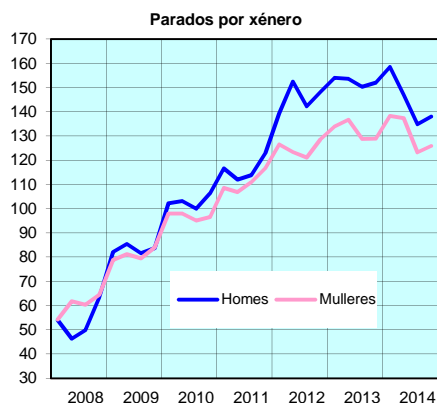
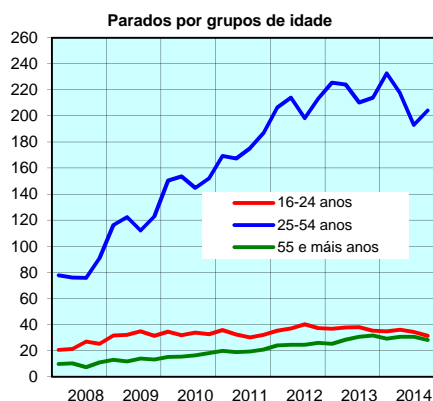
Taxas de variación anuais en % (TVI)

2008	16.2	30.0	6.2	28.6	13.1	14.8	21.8	18.7	36.4	-5.0
2009	44.5	56.0	34.3	37.9	47.6	34.5	30.6	146.8	83.0	38.5
2010	21.8	23.7	19.8	2.2	26.8	25.7	-5.2	28.6	78.0	52.0
2011	13.7	13.1	14.3	-1.7	16.3	20.6	7.3	-12.1	18.9	47.3
2012	19.1	25.1	12.7	14.8	19.1	25.7	3.2	30.1	8.9	46.8
2013	5.2	4.7	5.7	-1.5	5.0	16.9	-10.6	-10.6	5.6	31.4
2014	-3.1	-5.2	-0.6	-7.6	-3.0	2.2	-7.9	-13.1	-13.9	9.6

2012	I	18.0	19.5	16.5	-0.8	21.8	20.6	4.8	15.4	12.4	56.6
	II	26.0	36.2	15.4	13.8	27.9	30.0	15.9	25.2	11.5	57.4
	III	17.1	24.9	9.1	33.3	13.2	27.3	-3.9	39.8	10.0	40.0
	IV	15.5	20.5	10.2	15.8	14.2	25.0	-2.8	43.8	2.5	36.8
2013	I	8.3	10.5	5.8	3.9	9.3	5.8	-13.6	4.2	12.1	31.6
	II	5.2	0.7	10.8	2.2	4.7	15.4	-16.3	-3.8	8.6	33.2
	III	6.0	5.7	6.4	-5.9	6.1	24.3	-2.1	-16.0	1.2	34.9
	IV	1.4	2.6	0.2	-5.6	0.3	21.5	-9.2	-27.0	1.0	26.6
2014	I	3.1	3.0	3.3	-5.1	3.2	15.0	-0.6	-9.2	-3.8	17.0
	II	-2.1	-4.3	0.5	-4.5	-2.9	7.7	-12.0	-8.1	-15.1	15.4
	III	-7.5	-10.3	-4.3	-9.7	-8.2	0.0	-24.0	-15.4	-16.2	7.1
	IV	-6.1	-9.2	-2.3	-11.0	-4.6	-10.8	3.8	-22.8	-21.2	-0.1

Nota: As taxas interanuais do ano 2005 non se publican por mor do cambio metodoloxico da EPA 2005.

Miles de persoas



III. ECONOMÍA GALEGA

III.2 MERCADO DE TRABALLO.

III.2.4 Afiliacións e paro rexistrado por sectores de actividade

Período	Afiliados a Seguridade Social ⁽¹⁾						Paro rexistrado ⁽³⁾						s.e.a. ⁽²⁾
	Totais	Sector primario	Sector non primario			Totais	Sector primario	Sector non primario					
			Totais	Industria	Construc.			Servicios	Industria	Construc	Servicios		
Datos orixinais (en miles de persoas)													
2008	1072.5	81.1	991.4	175.8	138.3	677.3	162.5	5.0	25.4	19.7	89.9	22.5	
2009	1029.6	76.8	948.3	161.2	120.6	666.4	206.2	5.6	33.2	31.8	115.7	20.0	
2010	1007.4	72.5	926.2	154.1	108.9	663.2	226.2	6.1	34.8	35.7	123.5	26.2	
2011	980.3	69.7	902.2	147.5	96.2	658.4	241.3	6.5	36.9	39.4	130.7	27.9	
2012	941.2	67.1	867.3	139.3	81.0	647.0	270.5	7.7	40.2	45.3	151.1	26.2	
2013	913.8	64.3	847.5	133.4	72.3	641.9	276.0	9.0	38.9	42.9	162.7	22.5	
2014	918.8	63.2	854.1	131.1	71.7	651.2	257.0	8.8	35.3	35.6	156.3	20.9	
2012	I	943.1	67.5	867.6	141.3	84.6	641.7	274.3	7.4	41.8	47.0	149.4	28.6
	II	941.6	66.6	867.4	140.2	82.1	645.1	274.5	7.5	41.6	46.8	150.5	28.1
	III	952.3	68.7	876.2	140.0	81.1	655.1	258.9	6.9	38.4	43.1	145.8	24.8
	IV	927.8	65.7	858.2	135.9	76.3	646.0	274.4	9.0	39.1	44.3	158.7	23.3
2013	I	907.0	64.3	840.6	133.8	71.6	635.2	291.6	9.6	40.9	47.4	170.6	23.1
	II	910.9	63.9	845.0	134.1	71.8	639.0	282.6	9.3	39.6	44.7	165.9	23.0
	III	925.6	65.3	858.4	134.7	73.9	649.8	259.8	7.9	37.2	40.2	152.4	22.1
2014	I	911.6	63.6	846.3	130.8	71.9	643.6	270.0	9.2	37.8	39.3	162.0	21.7
	II	901.9	62.8	837.4	130.4	69.2	637.8	279.2	9.7	38.7	40.9	168.2	21.7
	III	914.0	62.8	849.5	131.2	71.3	647.0	262.0	9.0	36.3	36.8	158.5	21.4
	IV	935.7	64.5	869.7	132.7	74.2	662.8	238.5	7.8	32.9	32.3	144.9	20.7
2014	XAN	898.8	62.6	834.5	130.3	69.1	635.1	281.1	9.8	39.0	41.4	169.3	21.6
	FEB	901.3	62.8	836.9	130.3	68.7	637.8	280.1	9.7	38.8	41.4	168.4	21.7
	MAR	905.6	63.1	840.8	130.6	69.8	640.4	276.5	9.5	38.3	39.8	167.0	21.9
	ABR	906.3	63.0	841.7	129.9	69.9	641.9	270.1	9.2	37.8	38.6	162.8	21.7
	MAI	917.0	62.8	852.6	131.4	71.6	649.6	263.4	9.0	36.4	36.8	159.8	21.5
	XUN	918.6	62.7	854.3	132.1	72.6	649.7	252.3	8.8	34.8	35.0	152.9	20.8
	XUL	935.4	63.7	870.2	132.9	73.9	663.4	240.3	8.1	33.3	33.2	144.8	20.9
	AGO	940.3	64.0	874.8	133.0	74.3	667.4	236.9	7.8	32.8	32.2	143.5	20.5
	SET	931.4	65.8	864.1	132.2	74.3	657.6	238.2	7.4	32.6	31.4	146.2	20.6
	OUT	926.6	63.1	862.0	132.0	74.0	656.0	244.0	8.5	32.8	31.2	151.6	20.0
	NOV	928.7	63.0	864.3	132.3	73.4	658.5	248.6	8.9	32.9	31.8	154.6	20.3
	DEC	915.7	61.8	852.5	126.3	69.1	657.1	251.9	9.4	34.4	34.2	154.1	19.8
2015	XAN	915.1	61.2	852.5	130.9	70.9	650.7	259.0	9.6	33.8	33.9	161.5	20.2
	FEB	-	-	-	-	-	-	-	-	-	-	-	-

(1) : último día do mes

(2) s.e.a. : sen emprego anterior

(3) desde mar-09 o paro rexistrado por sectores refírese a CNAE-09

Nota: Paro rexistrado pola metodoloxía 2005 (xestión SISPE). Máis información en www.inem.es.

Taxas de variación interanuais en % (TVI)

2008	0.2	-4.5	0.6	-1.0	-4.8	2.3	7.9	8.6	7.1	29.7	6.7	-1.4	
2009	-4.0	-5.3	-4.3	-8.3	-12.8	-1.6	26.9	15.7	23.6	48.0	24.0	27.6	
2010	-2.2	-5.6	-2.3	-4.4	-9.7	-0.5	9.7	9.2	4.8	12.2	6.8	30.9	
2011	-2.7	-3.8	-2.6	-4.3	-11.6	-0.7	6.7	6.2	6.0	10.3	5.8	6.7	
2012	-4.0	-3.7	-3.9	-5.5	-15.8	-1.7	12.1	19.5	9.2	14.9	15.6	-6.2	
2013	-2.9	-4.3	-2.3	-4.3	-10.8	-0.8	2.0	17.0	-3.4	-5.3	7.7	-14.2	
2014	0.6	-1.7	0.8	-1.7	-0.8	1.5	-6.9	-2.0	-9.1	-17.0	-4.0	-6.8	
2012	I	-3.7	-3.5	-3.7	-5.3	-15.5	-1.6	10.7	13.9	11.8	18.4	10.9	-2.7
	II	-4.3	-4.0	-4.3	-5.8	-16.6	-2.1	14.7	14.4	14.1	20.5	16.2	0.1
	III	-3.8	-3.2	-3.8	-5.6	-15.7	-1.6	14.2	18.3	10.2	16.3	19.1	-7.2
	IV	-4.1	-4.0	-3.6	-5.5	-15.3	-1.6	9.2	30.5	1.0	5.3	16.6	-15.5
2013	I	-3.8	-4.8	-3.1	-5.3	-15.4	-1.0	6.3	30.0	-2.2	0.7	14.3	-19.4
	II	-3.3	-4.0	-2.6	-4.3	-12.5	-0.9	3.0	23.6	-4.8	-4.4	10.3	-18.0
	III	-2.8	-4.9	-2.0	-3.8	-8.9	-0.8	0.3	14.7	-3.2	-6.8	4.5	-10.8
2014	I	-1.8	-3.3	-1.4	-3.8	-5.8	-0.4	-1.6	2.4	-3.3	-11.3	2.1	-6.9
	II	-0.6	-2.2	-0.4	-2.5	-3.3	0.4	-4.3	0.5	-5.4	-13.7	-1.4	-5.8
	III	0.3	-1.7	0.5	-2.2	-0.7	1.3	-7.3	-3.4	-8.4	-17.7	-4.5	-7.3
	IV	1.1	-1.3	1.3	-1.4	0.4	2.0	-8.2	-2.1	-11.5	-19.7	-4.9	-6.4
2014	XAN	1.3	-1.4	1.6	-0.5	0.4	2.1	-8.1	-2.9	-11.7	-17.6	-5.3	-7.6
	XAN	-1.0	-2.6	-0.8	-3.1	-4.3	0.1	-3.3	1.2	-4.2	-12.7	-0.4	-6.2
	FEB	-0.5	-2.7	-0.3	-2.6	-4.3	0.6	-4.4	2.1	-5.6	-12.7	-1.9	-5.8
	MAR	-0.2	-1.4	0.0	-1.8	-1.4	0.5	-5.1	-1.9	-6.4	-15.7	-1.9	-5.5
	ABR	0.0	-1.6	0.1	-2.6	-1.8	0.9	-7.0	-3.1	-6.8	-16.3	-4.8	-6.8
	MAI	0.7	-1.3	0.9	-2.1	-0.2	1.7	-7.2	-4.1	-8.2	-17.6	-4.3	-7.5
	XUN	0.3	-2.0	0.6	-2.0	0.0	1.2	-7.7	-3.1	-10.2	-19.2	-4.3	-7.6
	XUL	1.0	-1.9	1.3	-1.5	0.4	1.9	-8.0	-1.6	-11.0	-19.7	-4.2	-8.8
	AGO	1.2	-1.5	1.4	-1.3	0.4	2.1	-8.0	-1.8	-11.9	-19.7	-4.6	-5.3
	SET	1.1	-0.5	1.3	-1.5	0.3	2.0	-8.6	-3.0	-11.6	-19.8	-5.9	-4.9
	OUT	1.6	-1.6	1.8	0.0	1.1	2.3	-9.0	-3.0	-12.6	-19.7	-6.1	-7.9
	NOV	1.3	-1.5	1.6	-0.4	0.3	2.1	-8.2	-2.2	-12.5	-17.6	-5.5	-7.3
DEC	1.1	-1.3	1.3	-1.1	-0.3	2.0	-7.1	-3.4	-10.1	-15.5	-4.4	-7.6	
2015	XAN	1.8	-2.2	2.2	0.5	2.6	2.4	-7.9	-2.6	-13.3	-18.0	-4.6	-6.3
	FEB	-	-	-	-	-	-	-	-	-	-	-	

III. ECONOMÍA GALEGA

III.2 MERCADO DE TRABALLO.

III.2.5 Afiliacións por rexímenes ⁽¹⁾

Período	Rexíme Xeral	Rexíme Especial de Autónomos			Rexíme Especial do Mar			Rexíme Especial M. do Carbón	TOTAL SISTEMA
		Total	No SETA	SETA	Total	Cta. allea	Cta. propia		

Datos orixinais (en miles de persoas)

2008	810.6	236.4	-	-	25.5	14.3	11.1	0.0	1072.5
2009	776.2	228.8	188.6	40.2	24.6	13.7	10.9	0.0	1029.6
2010	760.6	222.8	185.9	36.9	24.0	13.4	10.6	0.0	1007.4
2011	737.9	218.8	184.3	34.5	23.6	13.3	10.3	0.0	980.3
2012	702.5	215.8	183.1	32.7	22.9	12.9	10.0	0.0	941.2
2013	678.0	213.9	182.7	31.1	21.9	12.3	9.6	0.0	913.8
2014	681.1	216.2	186.4	29.8	21.5	12.1	9.5	0.0	918.8

2012	I	704.1	215.8	182.4	33.3	23.2	13.1	10.2	0.0	943.1
	II	702.8	216.2	183.2	32.9	22.6	12.7	9.8	0.0	941.6
	III	712.9	216.4	183.9	32.5	23.0	13.1	9.9	0.0	952.3
	IV	690.1	214.7	182.7	32.1	23.0	12.9	10.1	0.0	927.8
2013	I	672.4	212.8	181.1	31.7	21.8	12.5	9.3	0.0	907.0
	II	675.7	213.6	182.2	31.4	21.6	12.1	9.5	0.0	910.9
	III	688.9	214.7	183.8	30.9	22.0	12.5	9.6	0.0	925.6
	IV	675.1	214.4	183.9	30.5	22.1	12.2	9.9	0.0	911.6
2014	I	666.6	213.5	183.3	30.2	21.8	12.0	9.7	0.0	901.9
	II	676.8	215.9	185.9	30.0	21.2	11.9	9.3	0.0	914.0
	III	696.6	217.6	188.0	29.6	21.5	12.2	9.3	0.0	935.7
	IV	684.5	217.6	188.2	29.3	21.6	12.1	9.5	0.0	923.7

2014	XAN	663.9	213.2	182.9	30.3	21.7	11.9	9.8	0.0	898.8
	FEB	666.2	213.4	183.1	30.2	21.7	12.0	9.8	0.0	901.3
	MAR	669.8	214.0	183.8	30.2	21.9	12.2	9.7	0.0	905.6
	ABR	670.1	215.0	184.8	30.1	21.3	11.8	9.4	0.0	906.3
	MAI	680.0	215.9	185.8	30.0	21.1	11.9	9.2	0.0	917.0
	XUN	680.4	216.9	187.0	29.9	21.2	12.1	9.2	0.0	918.6
	XUL	696.3	217.6	187.9	29.7	21.5	12.3	9.2	0.0	935.4
	AGO	700.8	217.8	188.1	29.6	21.7	12.3	9.3	0.0	940.3
	SET	692.6	217.5	188.1	29.5	21.3	12.0	9.3	0.0	931.4
	OUT	687.2	217.5	188.1	29.4	21.8	12.3	9.5	0.0	926.6
	NOV	689.3	217.6	188.3	29.3	21.8	12.3	9.6	0.0	928.8
	DEC	676.9	217.6	188.3	29.3	21.2	11.7	9.5	0.0	915.7
2015	XAN	678.5	216.3	187.1	29.2	20.3	11.4	8.9	0.0	915.1
	FEB	-	-	-	-	-	-	-	-	-

(1) : último día do mes

Taxas de variación interanuais en % (TVI)

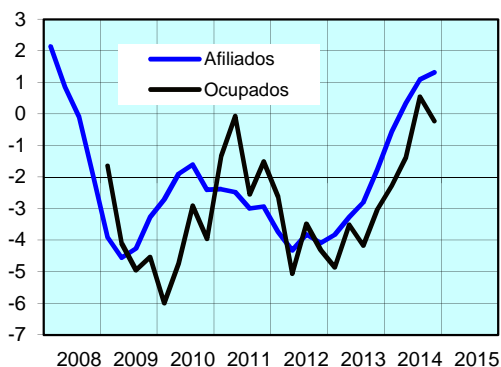
2008	0.7	-1.1	-	-	-2.8	-3.7	-1.6	-61.9	0.2
2009	-4.2	-3.2	-	-	-3.3	-4.0	-2.3	-48.9	-4.0
2010	-2.0	-2.6	-1.4	-8.2	-2.5	-2.2	-2.9	-35.1	-2.2
2011	-3.0	-1.8	-0.8	-6.5	-1.9	-1.1	-3.0	-40.9	-2.7
2012	-4.8	-1.4	-0.7	-5.3	-2.6	-2.7	-2.6	-82.7	-4.0
2013	-3.5	-0.9	-0.2	-4.8	-4.6	-4.8	-4.3	-85.7	-2.9
2014	0.5	1.1	2.0	-4.3	-1.7	-1.9	-1.2	-100.0	0.6

2012	I	-4.5	-1.5	-0.7	-5.5	-2.0	-1.6	-2.6	-76.2	-3.7
	II	-5.2	-1.4	-0.7	-5.4	-3.2	-3.3	-2.9	-85.7	-4.3
	III	-4.6	-1.3	-0.6	-5.1	-2.3	-2.7	-1.8	-85.7	-3.8
	IV	-4.9	-1.4	-0.8	-5.0	-3.0	-3.2	-2.9	-83.3	-4.1
2013	I	-4.5	-1.4	-0.7	-4.8	-6.1	-4.5	-8.3	-60.0	-3.8
	II	-3.9	-1.2	-0.5	-4.8	-4.4	-4.8	-3.9	-	-3.3
	III	-3.4	-0.8	-0.1	-4.9	-4.1	-4.7	-3.3	-	-2.8
	IV	-2.2	-0.2	0.6	-4.8	-3.6	-5.2	-1.6	-	-1.8
2014	I	-0.9	0.3	1.2	-4.7	-0.1	-3.5	4.6	-	-0.6
	II	0.2	1.1	2.0	-4.3	-1.7	-1.4	-2.0	-	0.3
	III	1.1	1.4	2.3	-4.3	-2.5	-1.7	-3.1	-	1.1
	IV	1.4	1.5	2.4	-3.9	-2.4	-1.1	-4.1	-	1.3

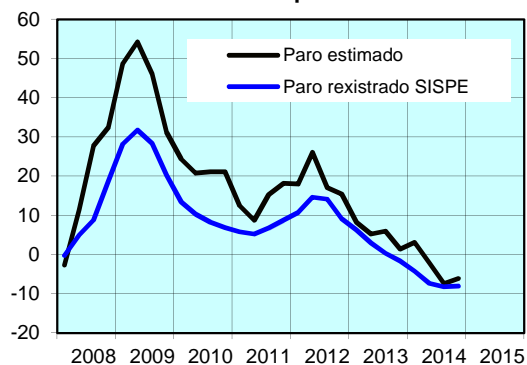
2014	XAN	-1.4	0.1	1.0	-4.8	0.2	-2.6	3.9	-	-1.0
	FEB	-0.8	0.3	1.2	-4.9	-1.1	-5.8	5.4	-	-0.5
	MAR	-0.4	0.5	1.4	-4.5	0.7	-2.2	4.5	-	-0.2
	ABR	-0.3	0.9	1.8	-4.4	-1.3	-2.6	0.4	-	0.0
	MAI	0.7	1.1	2.1	-4.2	-1.2	-0.2	-2.6	-	0.7
	XUN	0.1	1.2	2.2	-4.3	-2.4	-1.3	-3.8	-	0.3
	XUL	1.0	1.4	2.4	-4.3	-3.5	-2.8	-3.5	-	1.0
	AGO	1.2	1.4	2.4	-4.2	-1.7	-1.2	-2.4	-	1.2
	SET	1.2	1.3	2.2	-4.3	-2.1	-1.1	-3.4	-	1.1
	OUT	1.7	1.5	2.4	-4.0	-2.3	-1.1	-3.7	-	1.6
	NOV	1.4	1.5	2.4	-4.0	-2.9	-2.0	-4.1	-	1.3
	DEC	1.1	1.5	2.3	-3.7	-2.0	0.0	-4.3	-	1.1
2015	XAN	2.2	1.4	2.3	-3.6	-6.5	-4.6	-8.9	-	1.8
	FEB	-	-	-	-	-	-	-	-	-

Taxas de variación interanuais en % (TVI)

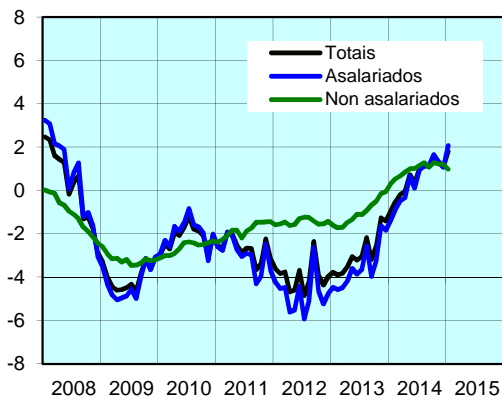
Afiliados e ocupados



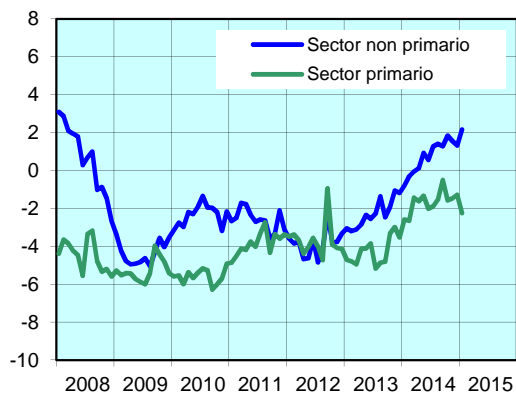
Paro estimado e paro rexistrado



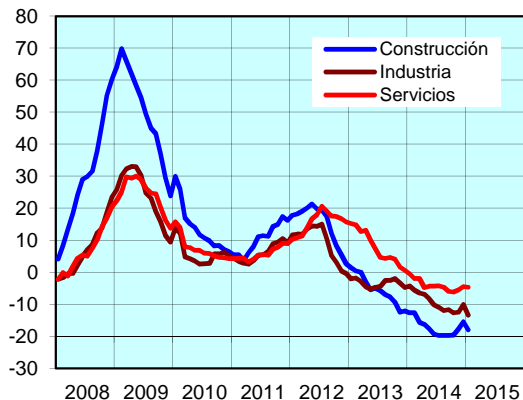
Afiliados á SS



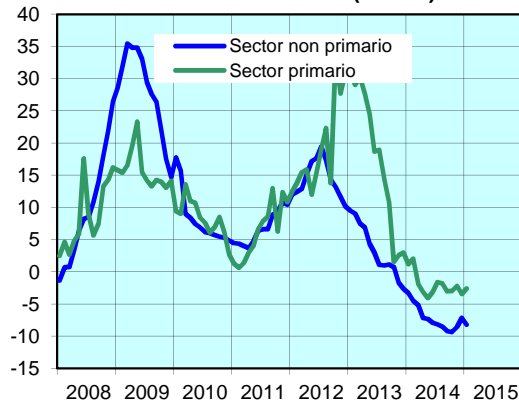
Afiliados á SS



Paro rexistrado (SISPE)



Paro rexistrado (SISPE)



SILE: Sistema de Información Laboral de Empleo). Antiga metodoloxía.

SISPE: (Sistema de Información de los Servicios Públicos de Empleo). Nova metodoloxía.

III. ECONOMÍA GALEGA

III.3 PREZOS E SALARIOS

III.3.1 Salarios e xornada laboral

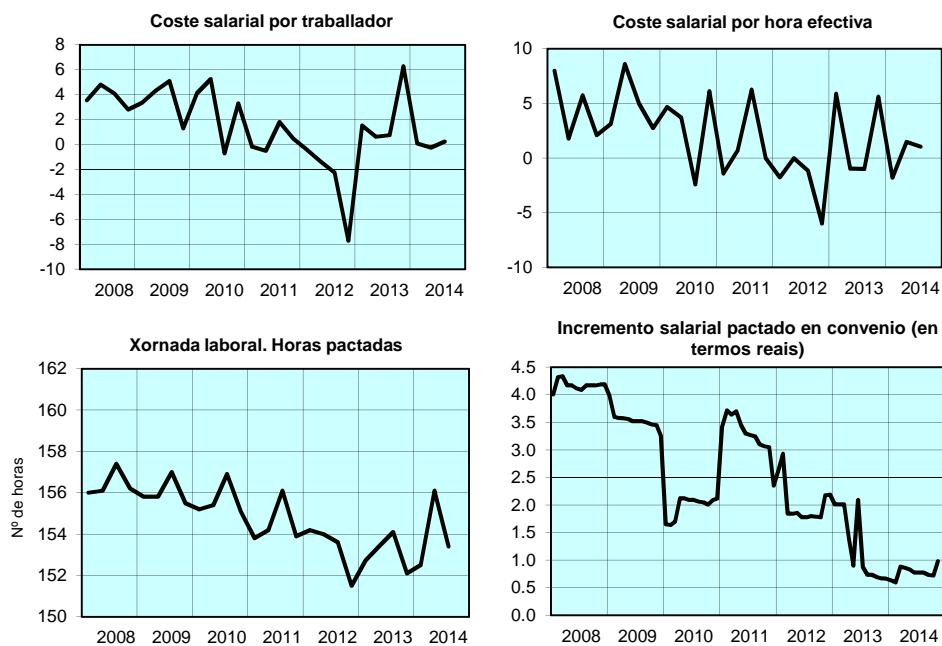
Período	Coste laboral por traballador e mes		Coste laboral por hora efectiva		Coste salarial por traballador e mes		Coste salarial por hora efectiva		Incremento salarial pactado en convenio	Xornada laboral (horas pactadas)		
	Euros	% var int	Euros	% var int	Euros	% var int	Euros	% var int		Total traballadores	Tempo completo	Tempo parcial
2008	2124.3	3.6	15.6	4.1	1561.0	3.8	11.5	4.2	4.19	156.4	169.5	83.4
2009	2199.7	3.5	16.4	4.9	1615.0	3.5	12.1	4.8	3.25	156.0	169.4	83.4
2010	2251.3	2.3	16.8	2.4	1663.2	3.0	12.4	3.0	2.12	155.7	169.5	84.7
2011	2265.3	0.6	17.1	1.6	1669.7	0.4	12.6	1.4	2.35	154.5	169.8	84.7
2012	2206.2	-2.6	16.8	-1.9	1618.1	-3.1	12.3	-2.3	2.19	153.3	169.6	85.3
2013	2260.2	2.4	17.2	2.4	1656.0	2.3	12.6	2.3	0.66	153.1	169.2	87.7
2014	-	-	-	-	-	-	-	-	-	-	-	-

2012	I	2157.0	0.1	15.4	-1.3	1547.2	-0.4	11.0	-1.8	1.84	154.2	169.8	85.9
	II	2244.4	-1.3	16.7	0.1	1665.7	-1.4	12.4	0.0	1.78	154.0	169.7	86.3
	III	2167.3	-2.2	17.4	-1.1	1586.7	-2.3	12.7	-1.2	1.79	153.6	169.5	85.7
	IV	2256.2	-6.6	17.6	-4.9	1673.0	-7.7	13.0	-6.0	2.19	151.5	169.5	83.3
2013	I	2178.9	1.0	16.2	5.3	1571.0	1.5	11.7	5.9	2.01	152.7	169.3	85.9
	II	2293.7	2.2	16.8	0.6	1676.0	0.6	12.3	-1.0	2.09	153.4	169.1	88.3
	III	2204.5	1.7	17.4	-0.1	1598.9	0.8	12.6	-1.0	0.73	154.1	169.4	89.7
	IV	2363.5	4.8	18.3	4.1	1778.2	6.3	13.8	5.6	0.66	152.1	169.1	87.0
2014	I	2170.3	-0.4	15.8	-2.2	1572.4	0.1	11.5	-1.8	0.88	152.5	169.3	86.0
	II	2291.8	-0.1	17.0	1.6	1671.9	-0.2	12.4	1.5	0.77	156.1	169.2	88.1
	III	2204.8	0.0	17.5	0.9	1602.8	0.2	12.7	1.0	0.73	153.4	169.1	89.9
	IV	-	-	-	-	-	-	-	-	-	-	-	-

2014	XAN												0.63
	FEB												0.60
	MAR												0.88
	ABR												0.86
	MAI												0.83
	XUN												0.77
	XULL												0.77
	AGO												0.77
	SET												0.73
	OUT												0.72
	NOV												0.98
	DEC												-

(1) As TVI do ano 2009 da Enquisa trimestral de custo laboral (ETCL) están corrixidas do impacto dos cambios metodolóxicos

Taxas de variación interanuais en % (TVI)



III. ECONOMÍA GALEGA

III.3 PREZOS E SALARIOS

III.3.2 Indicadores xerais de prezos. Base 2011

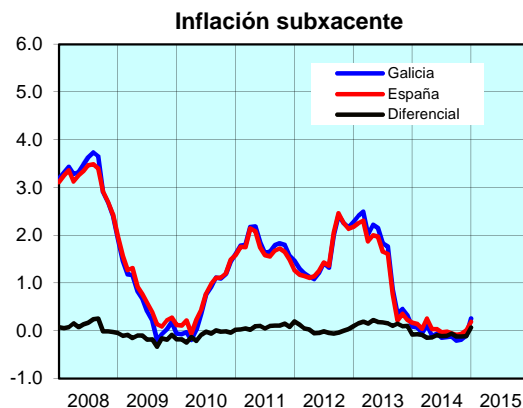
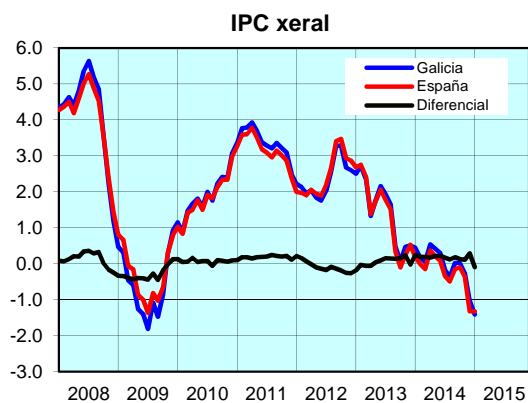
Período	IPC			Inflación subxacente (1)			Alimentación (2)			Non alimentación (3)			
	Índice	% variación		Índice	% variación		Índice	% variación		Índice	% variación		
		Período anterior	Ano anterior		Período anterior	Ano anterior		Período anterior	Ano anterior		Período anterior	Ano anterior	
2008	95.5	-	4.2	97.1	-	3.2	96.5	-	5.7	95.3	-	3.7	
2009	95.0	-	-0.6	97.7	-	0.6	96.5	-	0.0	94.5	-	-0.8	
2010	96.7	-	1.9	98.2	-	0.5	96.7	-	0.3	96.7	-	2.3	
2011	100.0	-	3.4	100.0	-	1.8	100.0	-	3.4	100.0	-	3.4	
2012	102.4	-	2.4	101.6	-	1.6	102.7	-	2.7	102.3	-	2.3	
2013	103.9	-	1.5	103.2	-	1.6	106.0	-	3.2	103.3	-	1.0	
2014	103.9	-	0.0	103.1	-	-0.1	105.7	-	-0.2	103.4	-	0.1	
2012	I	100.5	-1.0	2.1	99.8	-1.8	1.3	101.5	0.5	2.5	100.2	-1.4	2.0
	II	102.2	1.7	1.9	101.5	1.8	1.1	102.3	0.7	2.7	102.2	2.0	1.7
	III	102.4	0.1	2.6	101.1	-0.4	1.6	102.8	0.5	2.6	102.2	0.0	2.6
	IV	104.4	2.0	2.9	103.9	2.7	2.3	104.0	1.1	2.9	104.5	2.2	2.9
2013	I	103.0	-1.3	2.5	102.1	-1.7	2.4	104.8	0.8	3.2	102.6	-1.9	2.3
	II	104.0	0.9	1.7	103.7	1.5	2.1	105.8	1.0	3.4	103.5	0.9	1.3
	III	103.8	-0.2	1.4	102.6	-1.0	1.5	107.2	1.3	4.2	102.8	-0.7	0.5
	IV	104.7	0.9	0.3	104.3	1.6	0.4	106.0	-1.1	2.0	104.4	1.5	-0.1
2014	I	103.3	-1.4	0.2	102.2	-2.0	0.0	106.1	0.1	1.3	102.5	-1.8	-0.1
	II	104.5	1.1	0.4	103.7	1.5	0.0	105.2	-0.9	-0.6	104.3	1.7	0.7
	III	103.6	-0.8	-0.2	102.5	-1.1	-0.1	105.4	0.2	-1.7	103.1	-1.1	0.3
	IV	104.3	0.7	-0.4	104.1	1.6	-0.2	106.2	0.8	0.2	103.8	0.7	-0.6
2014	XAN	103.2	-1.5	0.4	102.0	-2.2	0.1	106.6	0.3	1.7	102.3	-2.1	0.1
	FEB	103.2	-0.1	0.2	102.0	0.0	0.1	106.2	-0.4	1.2	102.3	0.0	-0.1
	MAR	103.4	0.2	0.0	102.5	0.5	0.0	105.5	-0.6	0.8	102.8	0.5	-0.2
	ABR	104.3	0.9	0.5	103.6	1.0	0.1	105.3	-0.2	0.3	104.0	1.2	0.6
	MAI	104.5	0.1	0.4	103.7	0.1	-0.1	105.1	-0.2	-0.6	104.3	0.2	0.7
	XUÑ	104.6	0.1	0.3	103.8	0.1	-0.1	105.1	0.0	-1.4	104.4	0.2	0.8
	XUL	103.4	-1.2	-0.2	102.4	-1.4	-0.1	105.1	0.0	-2.0	102.9	-1.5	0.4
	AGO	103.6	0.2	-0.4	102.5	0.1	-0.1	105.5	0.3	-2.2	103.0	0.1	0.2
	SET	103.8	0.3	0.0	102.6	0.1	-0.1	105.6	0.2	-0.8	103.3	0.3	0.3
	OUT	104.6	0.7	0.0	103.8	1.2	-0.2	106.1	0.4	0.2	104.1	0.8	0.0
	NOV	104.6	0.0	-0.3	104.3	0.5	-0.2	106.3	0.2	0.2	104.1	-0.1	-0.4
	DEC	103.8	-0.7	-1.0	104.2	-0.1	-0.1	106.3	0.0	0.1	103.1	-1.0	-1.3
2015	XAN	101.8	-1.9	-1.4	102.3	-1.8	0.3	106.3	0.1	-0.2	100.5	-2.5	-1.8
	FEB	-	-	-	-	-	-	-	-	-	-	-	-

(1) IPC sin alimentos non elaborados nin produtos enerxéticos.

(2) Inclúe alimentos, bebidas e tabaco.

(3) IPC xeral sin alimentos, bebidas e tabaco.

Taxas de variación interanuais en % (TVI)

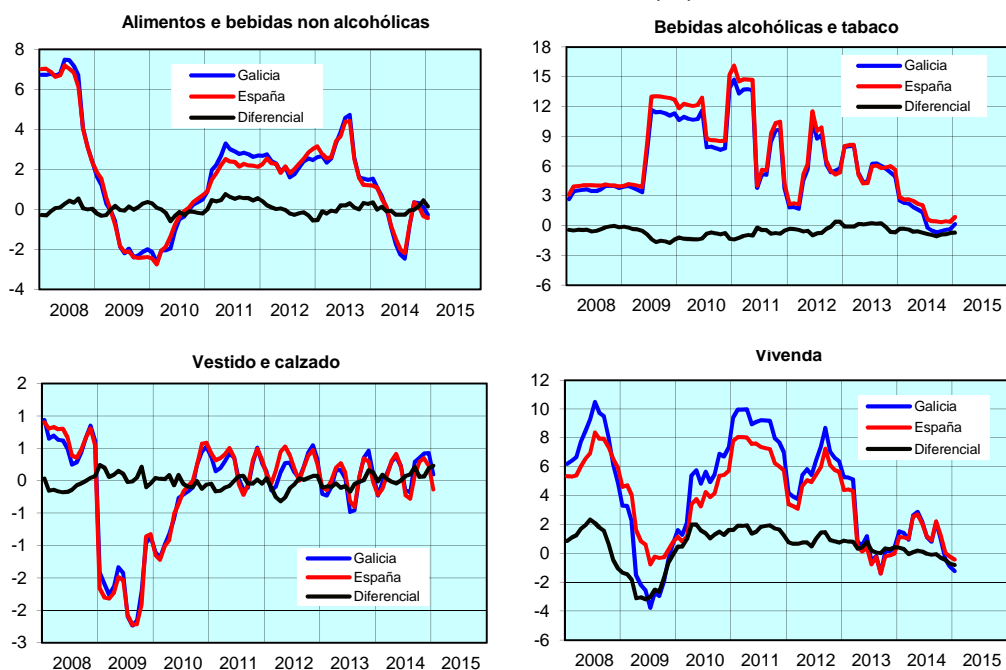


III. ECONOMÍA GALEGA
III.3 PREZOS E SALARIOS

III.3.3 IPC por grupos COICOP. Base 2011

Período	Alimentos e bebidas non alcohólicas			Bebidas alcohólicas e tabaco			Vestido e calzado			Vivenda		
	Índice	% variación		Índice	% variación		Índice	% variación		Índice	% variación	
		Período anterior	Ano anterior		Período anterior	Ano anterior		Período anterior	Ano anterior		Período anterior	Ano anterior
2008	99.5	-	6.0	77.1	-	3.6	101.7	-	0.6	88.2	-	7.8
2009	98.5	-	-1.0	83.2	-	7.9	100.1	-	-1.6	87.5	-	-0.7
2010	97.5	-	-1.0	91.4	-	9.8	99.8	-	-0.3	91.8	-	4.8
2011	100.0	-	2.6	100.0	-	9.4	100.0	-	0.2	100.0	-	9.0
2012	102.3	-	2.3	105.5	-	5.5	100.2	-	0.2	105.9	-	5.9
2013	105.1	-	2.8	111.9	-	6.0	100.2	-	0.0	107.4	-	1.3
2014	104.8	-	-0.3	112.7	-	0.7	100.4	-	0.2	108.8	-	1.3
2012 I	101.4	0.5	2.6	102.2	0.3	1.8	93.1	-14.7	0.0	102.3	0.8	4.0
2012 II	101.8	0.4	2.1	105.8	3.5	6.9	104.5	12.2	0.2	105.1	2.8	5.6
2012 III	102.3	0.5	1.8	106.7	0.8	8.0	93.4	-10.7	0.1	108.1	2.8	7.5
2012 IV	103.5	1.1	2.5	107.6	0.8	5.6	109.7	17.5	0.4	108.3	0.2	6.7
2013 I	104.0	0.5	2.5	110.3	2.6	8.0	93.0	-15.3	-0.2	107.6	-0.6	5.2
2013 II	105.1	1.0	3.2	110.8	0.4	4.7	104.7	12.6	0.1	106.0	-1.5	0.8
2013 III	106.4	1.2	4.0	113.2	2.2	6.2	93.1	-11.0	-0.3	107.3	1.2	-0.7
2013 IV	104.0	-2.2	0.5	113.3	0.1	5.3	110.1	18.2	0.3	108.5	1.1	0.2
2014 I	105.2	1.1	1.1	112.9	-0.3	2.4	92.9	-15.6	0.0	109.0	0.5	1.3
2014 II	104.2	-0.9	-0.9	112.5	-0.4	1.6	105.0	12.9	0.3	108.7	-0.3	2.6
2014 III	104.4	0.2	-1.9	112.7	0.1	-0.5	93.1	-11.3	0.0	108.8	0.1	1.4
2014 IV	105.3	0.9	1.2	112.8	0.1	-0.5	110.5	18.7	0.4	108.4	-0.4	-0.1
2014 XAN	105.7	0.4	1.5	112.9	-0.2	2.5	92.9	-15.8	-0.2	109.0	0.4	1.5
2014 FEB	105.2	-0.5	1.1	112.9	0.0	2.3	91.1	-2.0	0.0	109.1	0.2	1.4
2014 MAR	104.5	-0.7	0.7	113.0	0.0	2.2	94.9	4.2	0.1	109.0	-0.1	1.0
2014 ABR	104.3	-0.2	0.0	112.7	-0.2	1.8	103.5	9.1	0.3	108.9	-0.1	2.6
2014 MAI	104.1	-0.2	-0.9	112.5	-0.2	1.6	106.0	2.5	0.4	109.0	0.1	2.9
2014 XUN	104.1	0.0	-1.7	112.4	-0.2	1.4	105.4	-0.5	0.2	108.4	-0.6	2.2
2014 XUL	104.1	0.0	-2.3	112.7	0.3	-0.2	92.0	-12.8	-0.1	107.8	-0.5	1.2
2014 AGO	104.5	0.4	-2.5	112.7	0.0	-0.5	91.3	-0.7	-0.2	108.5	0.6	0.8
2014 SET	104.7	0.2	-0.8	112.7	0.0	-0.7	96.1	5.2	0.3	110.2	1.6	2.2
2014 OUT	105.2	0.5	0.4	112.8	0.1	-0.6	107.8	12.2	0.4	109.7	-0.4	1.0
2014 NOV	105.4	0.2	0.3	112.8	0.0	-0.4	113.0	4.7	0.4	108.0	-1.6	-0.4
2014 DEC	105.4	0.0	0.1	112.7	-0.1	-0.4	110.8	-1.9	0.4	107.5	-0.4	-0.9
2015 XAN	105.4	0.0	-0.3	113.1	0.4	0.1	93.0	-16.0	0.1	107.6	0.1	-1.2
2015 FEB	-	-	-	-	-	-	-	-	-	-	-	-

Series de precios interanuais en % (TVI)

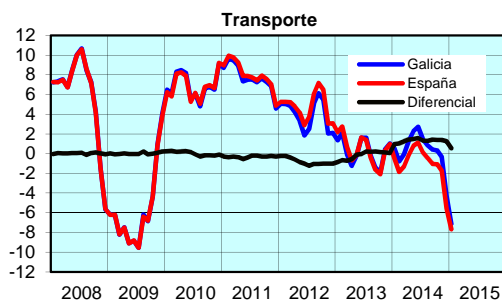
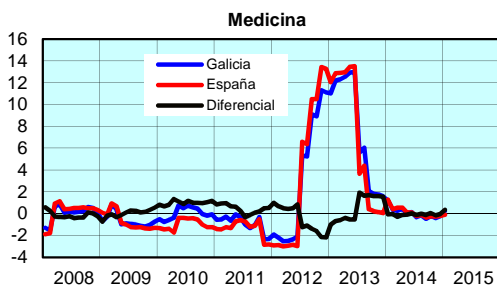
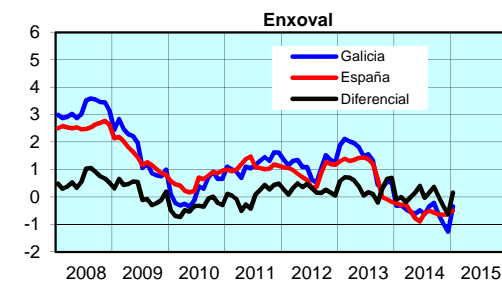


III. ECONOMÍA GALEGA
III.3 PREZOS E SALARIOS

III.3.3 IPC por grupos COICOP. Base 2011

Período	Enxoval			Medicina			Transporte			Comunicacións		
	Índice	% variación		Índice	% variación		Índice	% variación		Índice	% variación	
		Período anterior	Ano anterior		Período anterior	Ano anterior		Período anterior	Ano anterior		Período anterior	Ano anterior
2008	97.0	-	3.2	101.5	-	0.0	92.2	-	5.9	102.3	-	0.0
2009	98.6	-	1.7	100.9	-	-0.6	86.8	-	-5.8	101.6	-	-0.7
2010	98.8	-	0.2	100.9	-	0.0	92.8	-	6.9	100.8	-	-0.8
2011	100.0	-	1.2	100.0	-	-0.9	100.0	-	7.7	100.0	-	-0.8
2012	101.1	-	1.1	103.1	-	3.1	104.0	-	4.0	96.6	-	-3.4
2013	102.5	-	1.3	110.8	-	7.5	104.3	-	0.3	92.4	-	-4.3
2014	101.9	-	-0.6	110.9	-	0.0	104.7	-	0.4	86.8	-	-6.1
2012 I	100.2	-0.9	1.3	98.4	-0.4	-2.2	103.5	2.8	5.0	97.1	-2.0	-3.5
2012 II	101.0	0.8	1.2	98.3	-0.1	-2.3	103.5	-0.1	3.2	96.8	-0.3	-3.9
2012 III	100.8	-0.2	0.7	106.4	8.2	6.6	105.0	1.5	4.6	95.8	-1.0	-3.9
2012 IV	102.5	1.6	1.4	109.2	2.6	10.4	104.0	-1.0	3.2	96.6	0.9	-2.5
2013 I	102.2	-0.2	2.0	110.1	0.8	11.9	104.7	0.7	1.1	95.2	-1.5	-1.9
2013 II	102.8	0.6	1.8	110.9	0.8	12.8	103.5	-1.2	0.0	92.8	-2.5	-4.1
2013 III	101.9	-0.9	1.1	111.2	0.3	4.5	105.0	1.4	0.0	91.7	-1.2	-4.3
2013 IV	102.9	1.0	0.5	111.1	-0.2	1.7	103.8	-1.1	-0.1	90.0	-1.8	-6.9
2014 I	101.9	-1.1	-0.4	110.8	-0.3	0.6	104.6	0.8	-0.1	88.6	-1.6	-6.9
2014 II	102.3	0.4	-0.5	111.1	0.3	0.2	105.7	1.0	2.1	87.4	-1.4	-5.9
2014 III	101.5	-0.7	-0.4	110.9	-0.2	-0.3	106.0	0.2	0.9	86.2	-1.3	-6.0
2014 IV	102.0	0.4	-1.0	110.7	-0.2	-0.3	102.4	-3.4	-1.4	84.9	-1.6	-5.7
2014 XAN	101.8	-1.3	-0.3	110.7	-0.1	1.2	104.5	0.5	0.5	88.6	-1.5	-6.9
2014 FEB	101.9	0.1	-0.3	110.8	0.0	0.3	104.7	0.2	-0.8	88.6	0.1	-6.8
2014 MAR	101.9	0.0	-0.4	110.8	0.0	0.3	104.7	0.0	-0.1	88.6	0.0	-6.9
2014 ABR	102.2	0.3	-0.5	111.1	0.3	0.4	105.3	0.6	1.3	87.4	-1.4	-5.8
2014 MAI	102.2	0.0	-0.6	111.1	0.0	0.0	105.6	0.2	2.3	87.4	-0.1	-5.9
2014 XUN	102.4	0.1	-0.5	111.2	0.1	0.1	106.2	0.6	2.7	87.3	-0.1	-5.9
2014 XUL	101.4	-0.9	-0.6	111.0	-0.2	-0.3	106.2	0.0	1.5	86.2	-1.2	-6.0
2014 AGO	101.5	0.1	-0.3	111.0	0.1	-0.2	105.9	-0.3	0.9	86.2	0.0	-6.0
2014 SET	101.6	0.1	-0.2	110.7	-0.3	-0.5	105.8	-0.1	0.4	86.2	0.0	-5.9
2014 OUT	102.1	0.4	-0.6	110.9	0.2	-0.2	104.4	-1.3	0.3	84.9	-1.5	-5.8
2014 NOV	102.0	-0.1	-1.0	110.7	-0.2	-0.4	103.2	-1.1	-0.3	84.9	0.0	-5.8
2014 DEC	101.8	-0.2	-1.3	110.6	-0.1	-0.2	99.5	-3.5	-4.2	84.8	0.0	-5.7
2015 XAN	101.5	-0.3	-0.3	111.0	0.4	0.2	97.1	-2.5	-7.1	84.4	-0.5	-4.7
2015 FEB	-	-	-	-	-	-	-	-	-	-	-	-

Taxas de variación interanuais en % (TVA)



III. ECONOMÍA GALEGA
III.3 PREZOS E SALARIOS

III.3.3 IPC por grupos COICOP. Base 2011

Período	Ocio e cultura			Ensiño			Hotéis, cafés e restaurantes			Outros		
	Índice	% variación		Índice	% variación		Índice	% variación		Índice	% variación	
		Período anterior	Ano anterior		Período anterior	Ano anterior		Período anterior	Ano anterior		Período anterior	Ano anterior
2008	102.0	-	-0.4	92.0	-	4.2	93.7	-	5.1	93.6	-	-0.5
2009	101.5	-	-0.4	95.5	-	3.9	96.3	-	2.8	95.7	-	0.0
2010	100.1	-	-1.4	97.8	-	2.4	98.0	-	1.8	97.5	-	0.0
2011	100.0	-	-0.1	100.0	-	2.2	100.0	-	2.0	100.0	-	0.0
2012	100.5	-	0.5	103.3	-	3.3	101.2	-	1.2	102.0	-	0.0
2013	101.2	-	0.7	106.8	-	3.3	102.3	-	1.1	104.1	-	-0.1
2014	99.9	-	-1.2	108.4	-	1.5	102.9	-	0.6	104.6	-	0.0
2012 I	99.3	-0.6	0.3	102.3	0.2	3.2	100.1	0.1	1.3	101.0	0.6	1.8
2012 II	99.7	0.4	0.0	102.3	0.0	3.2	101.1	1.1	1.3	101.3	0.3	1.3
2012 III	101.6	1.9	0.3	102.4	0.1	2.8	102.3	1.2	0.9	101.8	0.4	1.4
2012 IV	101.3	-0.3	1.4	106.3	3.8	4.1	101.3	-1.0	1.3	103.9	2.1	3.5
2013 I	101.1	-0.2	1.7	106.3	0.0	3.9	101.5	0.2	1.4	104.2	0.3	3.1
2013 II	100.9	-0.2	1.2	106.3	0.0	4.0	102.2	0.7	1.1	104.2	0.0	2.9
2013 III	102.4	1.5	0.7	106.4	0.1	3.9	103.6	1.4	1.3	104.0	-0.2	2.2
2013 IV	100.4	-2.0	-0.9	108.0	1.5	1.6	101.9	-1.6	0.6	104.0	0.0	0.1
2014 I	99.7	-0.7	-1.4	108.0	0.0	1.5	101.9	0.0	0.4	104.4	0.4	0.2
2014 II	100.5	0.8	-0.4	108.1	0.1	1.6	102.9	1.0	0.7	104.7	0.3	0.5
2014 III	100.9	0.4	-1.5	108.3	0.2	1.7	104.3	1.4	0.7	104.8	0.1	0.8
2014 IV	98.6	-2.2	-1.7	109.1	0.8	1.1	102.5	-1.7	0.6	104.7	-0.1	0.6
2014 XAN	98.9	-2.0	-1.1	108.0	-0.1	1.5	101.8	-0.1	0.4	104.1	0.0	-0.1
2014 FEB	100.0	1.2	-0.5	108.0	0.0	1.5	101.8	0.0	0.4	104.5	0.4	0.2
2014 MAR	100.1	0.1	-2.5	108.0	0.1	1.6	102.1	0.2	0.4	104.7	0.1	0.6
2014 ABR	101.1	1.0	0.2	108.1	0.0	1.6	102.7	0.6	0.8	104.5	-0.1	0.4
2014 MAI	100.0	-1.1	-0.6	108.1	0.0	1.6	102.6	-0.1	0.4	104.6	0.0	0.3
2014 XUN	100.3	0.3	-0.8	108.1	0.0	1.8	103.3	0.6	0.8	105.0	0.5	0.8
2014 XUL	101.1	0.8	-1.4	108.1	0.0	1.9	104.2	0.9	0.8	104.9	-0.1	0.9
2014 AGO	101.9	0.8	-1.4	108.1	0.0	1.9	105.3	1.0	0.6	104.8	-0.1	0.8
2014 SET	99.6	-2.3	-1.6	108.5	0.3	1.4	103.3	-1.9	0.6	104.7	0.0	0.7
2014 OUT	98.8	-0.8	-1.9	109.1	0.6	1.1	102.9	-0.5	0.7	104.7	0.0	0.7
2014 NOV	98.0	-0.8	-1.5	109.1	0.0	1.1	102.4	-0.5	0.6	104.6	-0.1	0.6
2014 DEC	99.0	1.0	-1.8	109.1	0.0	1.0	102.4	0.0	0.5	104.7	0.1	0.7
2015 XAN	98.6	-0.4	-0.2	109.1	0.0	1.1	102.2	-0.2	0.5	105.2	0.5	1.1
2015 FEB	-	-	-	-	-	-	-	-	-	-	-	-

Taxas de variación interanuais en % (TVI)

